

Product datasheet for **TA387168**

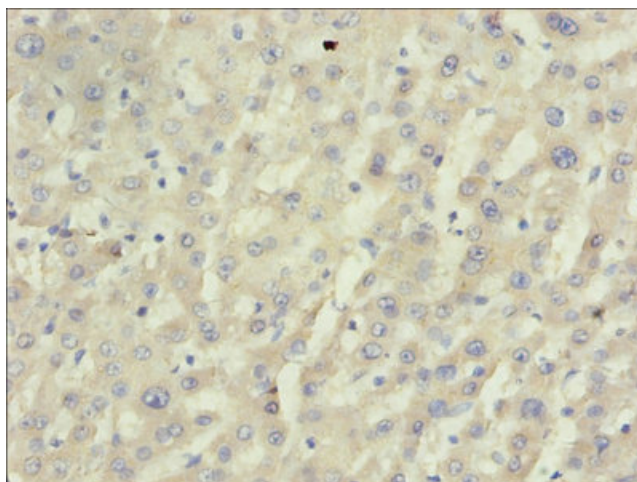
BDH1 Rabbit Polyclonal Antibody

Product data:

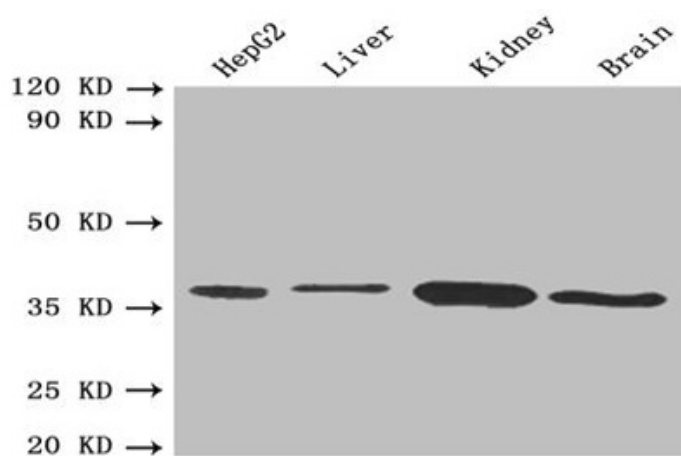
Product Type:	Primary Antibodies
Applications:	IHC, WB
Recommended Dilution:	Recommended dilution: WB:1:500-1:2000, IHC:1:20-1:200
Reactivity:	Mouse, Human
Host:	Rabbit
Isotype:	IgG
Clonality:	Polyclonal
Immunogen:	Recombinant Human D-beta-hydroxybutyrate dehydrogenase, mitochondrial protein (47-343AA)
Formulation:	Preservative: 0.03% Proclin 300 Constituents: 50% Glycerol, 0.01M PBS, PH 7.4
Concentration:	lot specific
Purification:	>95%, Protein G purified
Conjugation:	Unconjugated
Storage:	Upon receipt, store at -20°C or -80°C. Avoid repeated freeze.
Stability:	1 year from dispatch.
Database Link:	Q02338
Background:	D-beta-Hydroxybutyrate dehydrogenase mitochondria has been purified to apparent homogeneity. The membrane-bound enzyme is first released by phospholipase A digestion of the mitochondria.



[View online »](#)

Product images:

Immunohistochemistry of paraffin-embedded mouse liver tissue using TA387168 at dilution of 1:50



Western blot
All lanes: BDH1 antibody at 2.4 μ g/ml
Lane 1: HepG2 whole cell lysate
Lane 2: Mouse liver tissue
Lane 3: Mouse kidney tissue
Lane 4: Mouse brain tissue
Secondary
Goat polyclonal to rabbit IgG at 1/10000 dilution
Predicted band size: 39 kDa
Observed band size: 39 kDa