

Product datasheet for **TA387166M**

CNTNAP1 Rabbit Polyclonal Antibody

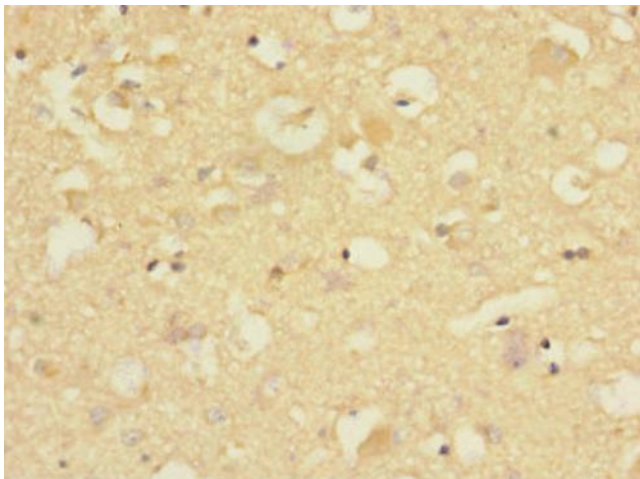
Product data:

Product Type:	Primary Antibodies
Applications:	IHC, WB
Recommended Dilution:	Recommended dilution: WB:1:1000-1:5000, IHC:1:20-1:200
Reactivity:	Mouse, Human
Host:	Rabbit
Isotype:	IgG
Clonality:	Polyclonal
Immunogen:	Recombinant Human Contactin-associated protein 1 protein (20-300AA)
Formulation:	PBS with 0.02% sodium azide, 50% glycerol, pH7.3.
Concentration:	lot specific
Purification:	Antigen Affinity Purified
Conjugation:	Unconjugated
Storage:	Upon receipt, store at -20°C or -80°C. Avoid repeated freeze.
Stability:	1 year from dispatch.
Database Link:	P78357
Background:	Seems to play a role in the formation of functional distinct domains critical for saltatory conduction of nerve impulses in myelinated nerve fibers. Seems to demarcate the paranodal region of the axo-glial junction. In association with contactin may have a role in the signaling between axons and myelinating glial cells.

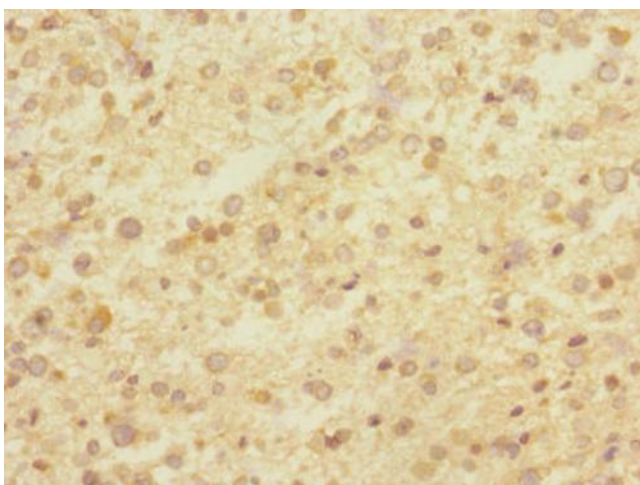


[View online »](#)

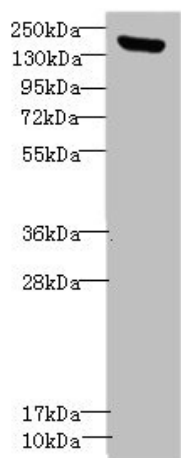
Product images:



Immunohistochemistry of paraffin-embedded human brain tissue using [TA387166] at dilution of 1:100



Immunohistochemistry of paraffin-embedded human glioma using [TA387166] at dilution of 1:100



Western blot

All lanes: CNTNAP1 antibody IgG at 1.36µg/ml +

Mouse brain tissue

Secondary

Goat polyclonal to rabbit IgG at 1/10000 dilution

Predicted band size: 156 kDa

Observed band size: 156 kDa