

Product datasheet for **TA387164**

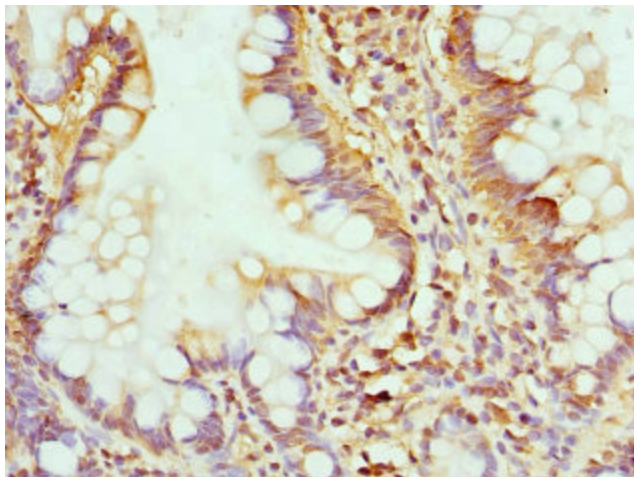
GMPS Rabbit Polyclonal Antibody

Product data:

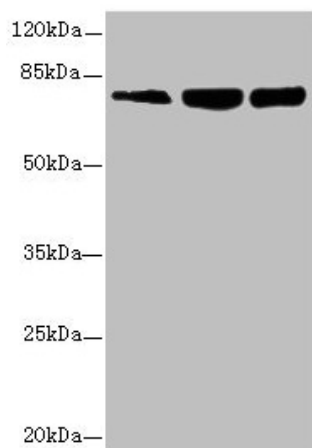
Product Type:	Primary Antibodies
Applications:	IHC, WB
Recommended Dilution:	Recommended dilution: WB:1:1000-1:5000, IHC:1:20-1:200
Reactivity:	Human
Host:	Rabbit
Isotype:	IgG
Clonality:	Polyclonal
Immunogen:	Recombinant Human GMP synthase [glutamine-hydrolyzing] protein (394-693AA)
Formulation:	PBS with 0.02% sodium azide, 50% glycerol, pH7.3.
Concentration:	lot specific
Purification:	Antigen Affinity Purified
Conjugation:	Unconjugated
Storage:	Upon receipt, store at -20°C or -80°C. Avoid repeated freeze.
Stability:	1 year from dispatch.
Database Link:	P49915
Background:	Involved in the de novo synthesis of guanine nucleotides which are not only essential for DNA and RNA synthesis, but also provide GTP, which is involved in a number of cellular processes important for cell division.



[View online »](#)

Product images:

Immunohistochemistry of paraffin-embedded human small intestine tissue using TA387164 at dilution of 1:100



Western blot
All lanes: GMPS antibody at 2.69 μ g/ml
Lane 1: Hela whole cell lysate
Lane 2: HL60 whole cell lysate
Lane 3: MCF-7 whole cell lysate
Secondary
Goat polyclonal to rabbit IgG at 1/10000 dilution
Predicted band size: 77, 66 kDa
Observed band size: 77 kDa