

Product datasheet for **TA387161M**

MATK Rabbit Polyclonal Antibody

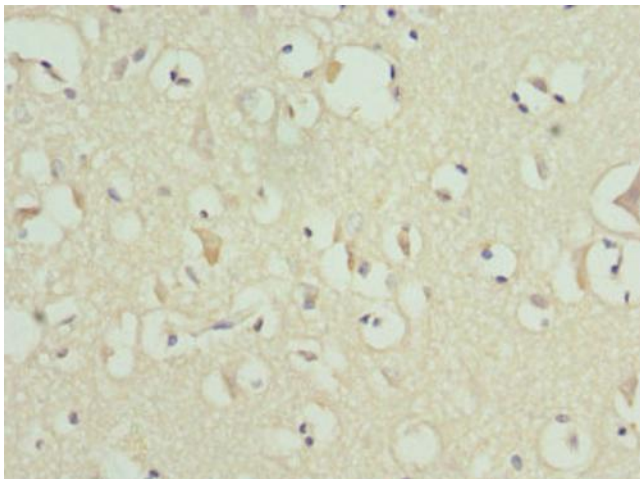
Product data:

Product Type:	Primary Antibodies
Applications:	IHC, WB
Recommended Dilution:	Recommended dilution: WB:1:1000-1:5000, IHC:1:20-1:200
Reactivity:	Human
Host:	Rabbit
Isotype:	IgG
Clonality:	Polyclonal
Immunogen:	Recombinant Human Megakaryocyte-associated tyrosine-protein kinase protein (393-507AA)
Formulation:	PBS with 0.02% sodium azide, 50% glycerol, pH7.3.
Concentration:	lot specific
Purification:	Antigen Affinity Purified
Conjugation:	Unconjugated
Storage:	Upon receipt, store at -20°C or -80°C. Avoid repeated freeze.
Stability:	1 year from dispatch.
Database Link:	P42679
Background:	Could play a significant role in the signal transduction of hematopoietic cells. May regulate tyrosine kinase activity of SRC-family members in brain by specifically phosphorylating their C-terminal regulatory tyrosine residue which acts as a negative regulatory site. It may play an inhibitory role in the control of T-cell proliferation.

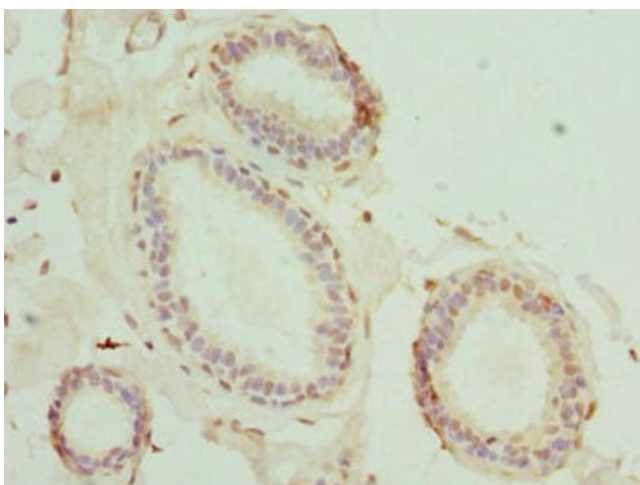


[View online »](#)

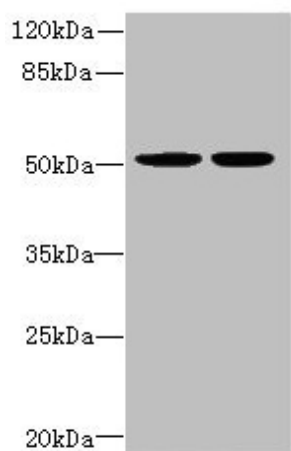
Product images:



Immunohistochemistry of paraffin-embedded human brain tissue using [TA387161] at dilution of 1:100



Immunohistochemistry of paraffin-embedded human breast cancer using [TA387161] at dilution of 1:100



Western blot

All lanes: MATK antibody at 5.06µg/ml

Lane 1: MCF-7 whole cell lysate

Lane 2: Hela whole cell lysate

Secondary

Goat polyclonal to rabbit IgG at 1/10000 dilution

Predicted band size: 57, 52 kDa

Observed band size: 52 kDa