

## Product datasheet for **TA387158M**

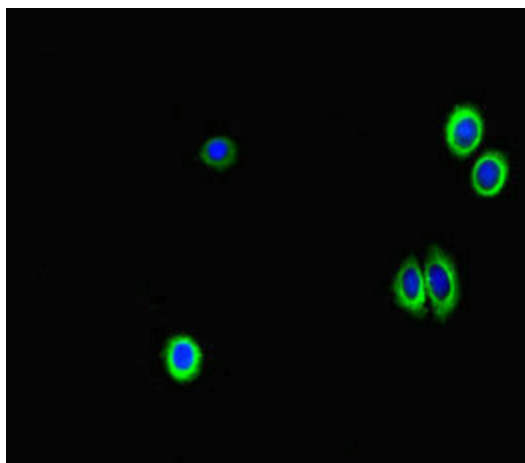
### GAA Rabbit Polyclonal Antibody

#### Product data:

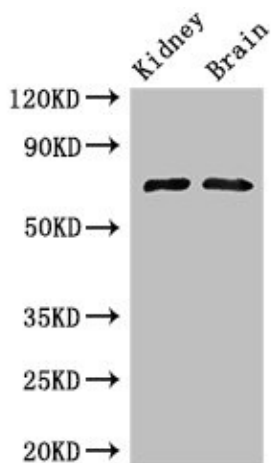
Product Type:	Primary Antibodies
Applications:	IF, IHC, WB
Recommended Dilution:	Recommended dilution: WB:1:1000-1:5000, IHC:1:20-1:200, IF:1:50-1:200
Reactivity:	Mouse, Human
Host:	Rabbit
Isotype:	IgG
Clonality:	Polyclonal
Immunogen:	Recombinant Human Lysosomal alpha-glucosidase protein (601-952AA)
Formulation:	Preservative: 0.03% Proclin 300 Constituents: 50% Glycerol, 0.01M PBS, PH 7.4
Concentration:	lot specific
Purification:	>95%, Protein G purified
Conjugation:	Unconjugated
Storage:	Upon receipt, store at -20°C or -80°C. Avoid repeated freeze.
Stability:	1 year from dispatch.
Database Link:	<a href="#">P10253</a>
Background:	Essential for the degradation of glycogen to glucose in lysosomes.



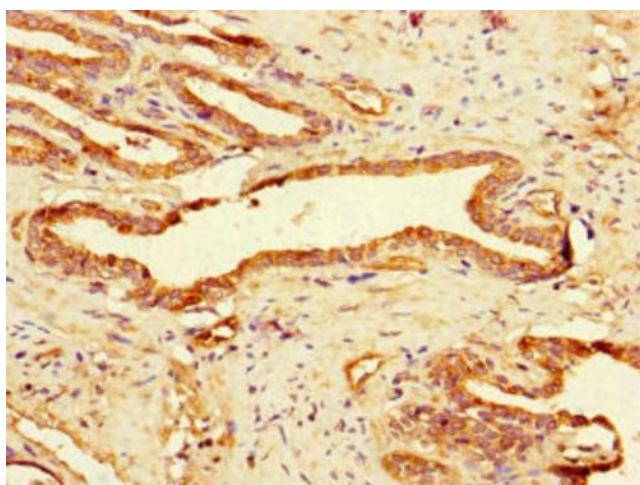
[View online »](#)

**Product images:**


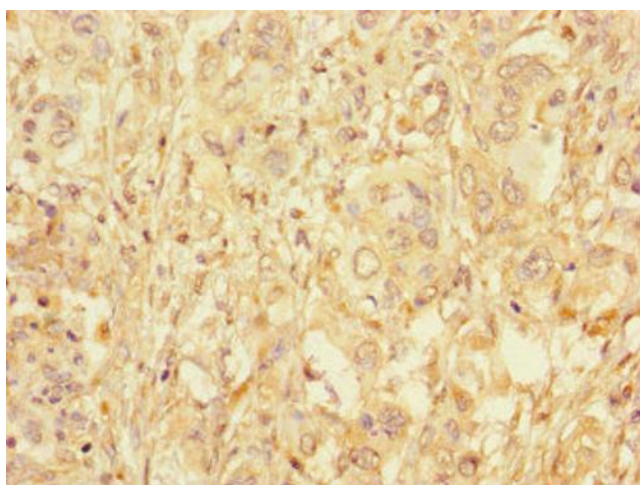
Immunofluorescent analysis of HepG2 cells using [TA387158] at dilution of 1:100 and Alexa Fluor 488-conjugated AffiniPure Goat Anti-Rabbit IgG(H+L)



Western Blot  
Positive WB detected in: Mouse kidney tissue,  
Mouse brain tissue  
All lanes: GAA Antibody at 3µg/ml  
Secondary  
Goat polyclonal to rabbit IgG at 1/50000 dilution  
Predicted band size: 70, 76, 106 kDa  
Observed band size: 70 kDa



Immunohistochemistry of paraffin-embedded human prostate cancer using [TA387158] at dilution of 1:100



Immunohistochemistry of paraffin-embedded human pancreatic cancer using [TA387158] at dilution of 1:100