

Product datasheet for **TA387151M**

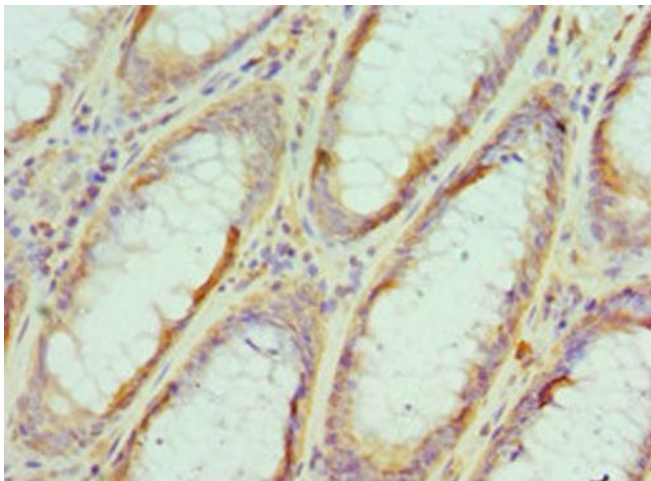
EIF4A1 Rabbit Polyclonal Antibody

Product data:

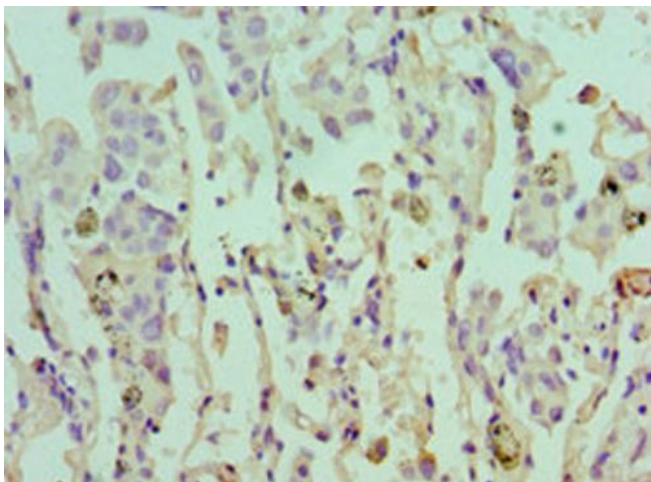
Product Type:	Primary Antibodies
Applications:	IHC, WB
Recommended Dilution:	Recommended dilution: WB:1:500-1:5000, IHC:1:20-1:200
Reactivity:	Rat, Human
Host:	Rabbit
Isotype:	IgG
Clonality:	Polyclonal
Immunogen:	Recombinant Human Eukaryotic initiation factor 4A-I protein (167-406AA)
Formulation:	PBS with 0.02% sodium azide, 50% glycerol, pH7.3.
Concentration:	lot specific
Purification:	Antigen Affinity Purified
Conjugation:	Unconjugated
Storage:	Upon receipt, store at -20°C or -80°C. Avoid repeated freeze.
Stability:	1 year from dispatch.
Database Link:	P60842
Background:	ATP-dependent RNA helicase which is a subunit of the eIF4F complex involved in cap recognition and is required for mRNA binding to ribosome. In the current model of translation initiation, eIF4A unwinds RNA secondary structures in the 5'-UTR of mRNAs which is necessary to allow efficient binding of the small ribosomal subunit, and subsequent scanning for the initiator codon.



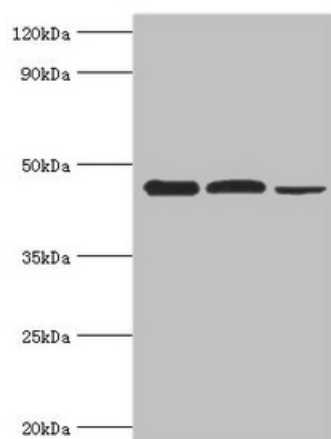
[View online »](#)

Product images:

Immunohistochemistry of paraffin-embedded human colon cancer using [TA387151] at dilution of 1:100



Immunohistochemistry of paraffin-embedded human lung cancer using [TA387151] at dilution of 1:100



Western blot

All lanes: Eukaryotic initiation factor 4A-I antibody at 3µg/ml

Lane 1: K562 whole cell lysate

Lane 2: Hela whole cell lysate

Lane 3: Rat brain tissue

Secondary

Goat polyclonal to rabbit IgG at 1/10000 dilution

Predicted band size: 47, 40 kDa

Observed band size: 47 kDa