

Product datasheet for **TA387149M**

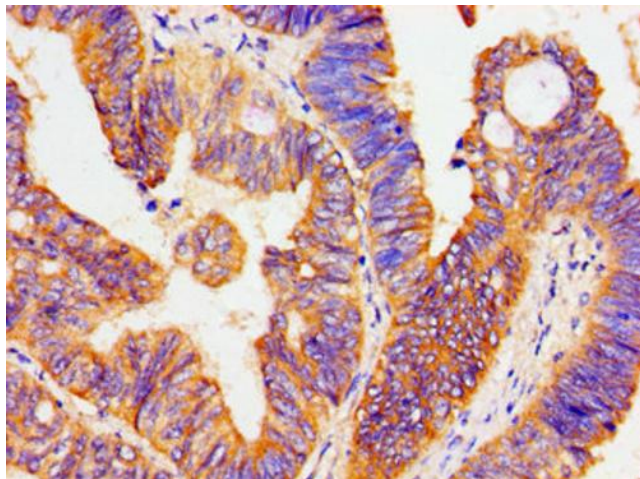
ATP1B1 Rabbit Polyclonal Antibody

Product data:

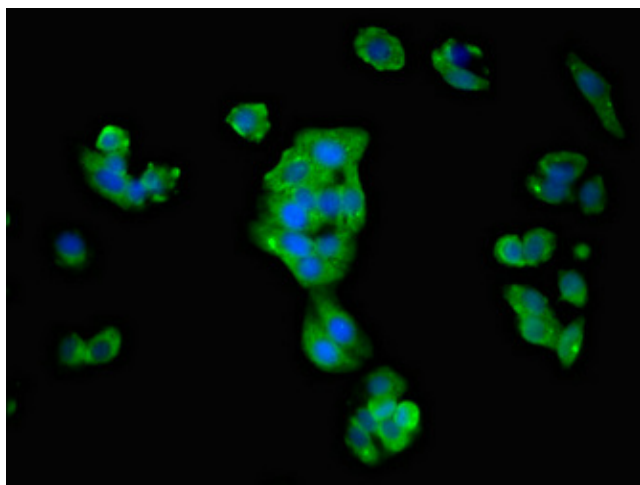
Product Type:	Primary Antibodies
Applications:	IF, IHC, WB
Recommended Dilution:	Recommended dilution: WB:1:500-1:5000, IHC:1:20-1:200, IF:1:50-1:200
Reactivity:	Rat, Mouse, Human
Host:	Rabbit
Isotype:	IgG
Clonality:	Polyclonal
Immunogen:	Recombinant Human Sodium/potassium-transporting ATPase subunit beta-1 protein (64-241AA)
Formulation:	Preservative: 0.03% Proclin 300 Constituents: 50% Glycerol, 0.01M PBS, pH 7.4
Concentration:	lot specific
Purification:	>95%, Protein G purified
Conjugation:	Unconjugated
Storage:	Upon receipt, store at -20°C or -80°C. Avoid repeated freeze.
Stability:	1 year from dispatch.
Database Link:	P05026
Background:	This is the non-catalytic component of the active enzyme, which catalyzes the hydrolysis of ATP coupled with the exchange of Na(+) and K(+) ions across the plasma membrane. The beta subunit regulates, through assembly of alpha/beta heterodimers, the number of sodium pumps transported to the plasma membrane.



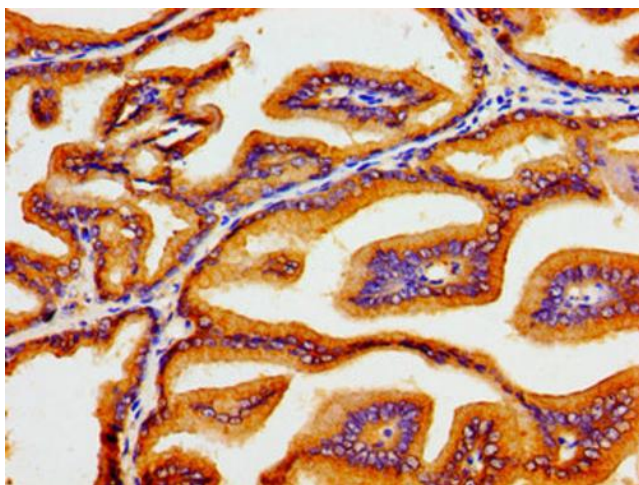
[View online »](#)

Product images:

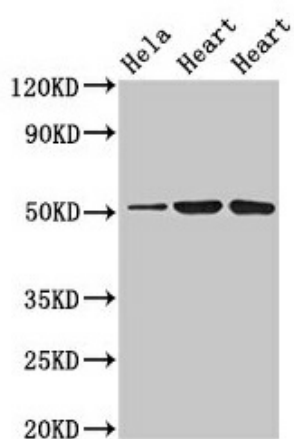
Immunohistochemistry of paraffin-embedded human colon cancer using [TA387149] at dilution of 1:100



Immunofluorescent analysis of HepG2 cells using [TA387149] at dilution of 1:100 and Alexa Fluor 488-conjugated AffiniPure Goat Anti-Rabbit IgG(H+L)



Immunohistochemistry of paraffin-embedded human prostate tissue using [TA387149] at dilution of 1:100



Western Blot

Positive WB detected in: HeLa whole cell lysate,
Rat heart tissue, Mouse heart tissue
All lanes: ATP1B1 antibody at 3 μ g/ml
Secondary
Goat polyclonal to rabbit IgG at 1/50000 dilution
Predicted band size: 36, 35 kDa
Observed band size: 52 kDa