

Product datasheet for **TA387148**

PMM2 Rabbit Polyclonal Antibody

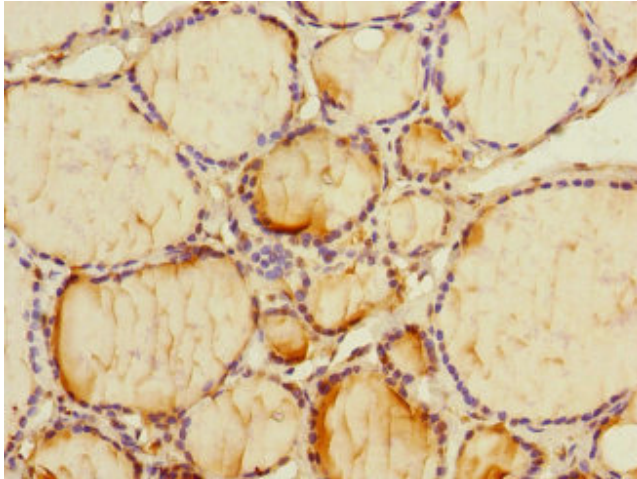
Product data:

Product Type:	Primary Antibodies
Applications:	IHC, IP, WB
Recommended Dilution:	Recommended dilution: WB:1:1000-1:5000, IHC:1:20-1:200, IP:1:200-1:2000
Reactivity:	Human
Host:	Rabbit
Isotype:	IgG
Clonality:	Polyclonal
Immunogen:	Recombinant Human Phosphomannomutase 2 protein (1-246AA)
Formulation:	PBS with 0.02% sodium azide, 50% glycerol, pH7.3.
Concentration:	lot specific
Purification:	Antigen Affinity Purified
Conjugation:	Unconjugated
Storage:	Upon receipt, store at -20°C or -80°C. Avoid repeated freeze.
Stability:	1 year from dispatch.
Database Link:	O15305
Background:	Involved in the synthesis of the GDP-mannose and dolichol-phosphate-mannose required for a number of critical mannosyl transfer reactions.

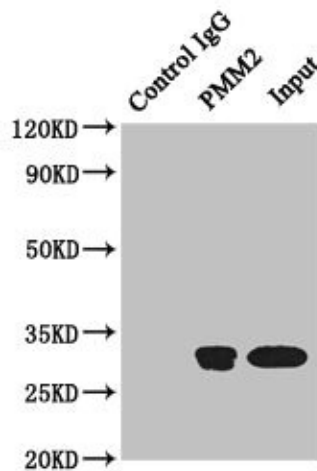


[View online »](#)

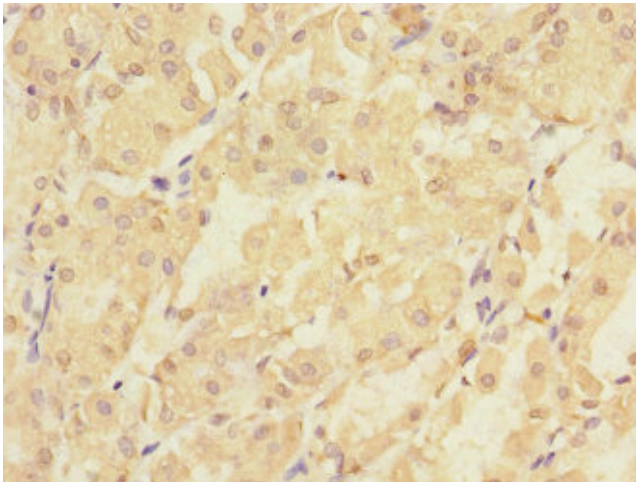
Product images:



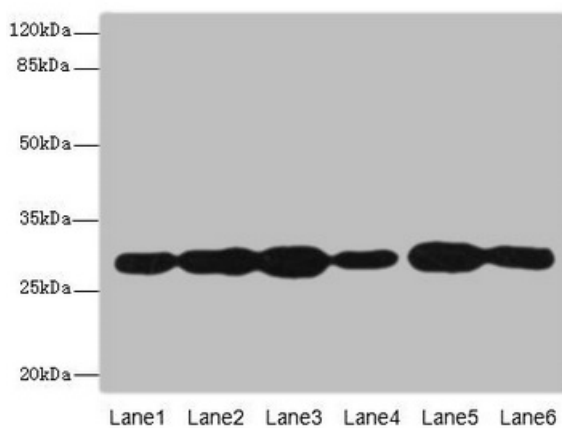
Immunohistochemistry of paraffin-embedded human thyroid tissue using TA387148 at dilution of 1:100



Immunoprecipitating PMM2 in HeLa whole cell lysate
 Lane 1: Rabbit control IgG instead of (1 μ g) instead of TA387148 in HeLa whole cell lysate. For western blotting, a HRP-conjugated anti-rabbit IgG, specific to the non-reduced form of IgG was used as the Secondary antibody (1/50000)
 Lane 2: TA387148 (4 μ g) + HeLa whole cell lysate (500 μ g)
 Lane 3: HeLa whole cell lysate (20 μ g)



Immunohistochemistry of paraffin-embedded human gastric cancer using TA387148 at dilution of 1:100



Western blot

All lanes: PMM2 antibody at 3.8 μ g/ml

Lane 1: A549 whole cell lysate

Lane 2: HepG2 whole cell lysate

Lane 3: MCF-7 whole cell lysate

Lane 4: K562 whole cell lysate

Lane 5: Hela whole cell lysate

Lane 6: 293T whole cell lysate

Secondary

Goat polyclonal to rabbit IgG at 1/10000 dilution

Predicted band size: 29, 14 kDa

Observed band size: 29 kDa