

## Product datasheet for **TA387147M**

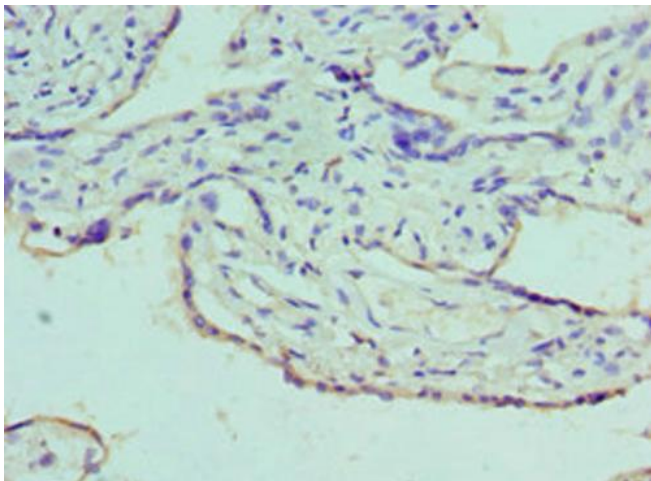
### AZU1 Rabbit Polyclonal Antibody

#### Product data:

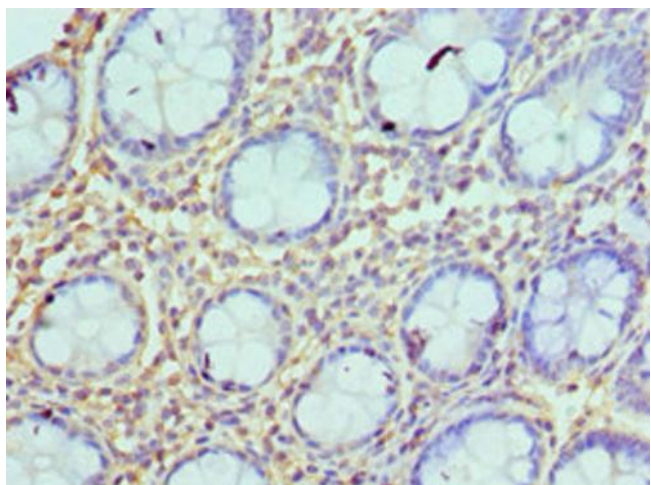
Product Type:	Primary Antibodies
Applications:	IHC, WB
Recommended Dilution:	Recommended dilution: WB:1:500-1:2000, IHC:1:20-1:200
Reactivity:	Mouse, Human
Host:	Rabbit
Isotype:	IgG
Clonality:	Polyclonal
Immunogen:	Recombinant Human Azurocidin protein (27-251AA)
Formulation:	PBS with 0.02% sodium azide, 50% glycerol, pH7.3.
Concentration:	lot specific
Purification:	Antigen Affinity purified
Conjugation:	Unconjugated
Storage:	Upon receipt, store at -20°C or -80°C. Avoid repeated freeze.
Stability:	1 year from dispatch.
Database Link:	<a href="#">P20160</a>
Background:	<p>This is a neutrophil granule-derived antibacterial and monocyte- and fibroblast-specific chemotactic glycoprotein. Binds heparin. The cytotoxic action is limited to many species of Gram-negative bacteria; this specificity may be explained by a strong affinity of the very basic N-terminal half for the negatively charged lipopolysaccharides that are unique to the Gram-negative bacterial outer envelope. It may play a role in mediating recruitment of monocytes in the second wave of inflammation. Has antibacterial activity against the Gram-negative bacterium <i>P.aeruginosa</i>, this activity is inhibited by LPS from <i>P.aeruginosa</i>. Acting alone, it does not have antimicrobial activity against the Gram-negative bacteria <i>A.actinomycetemcomitans</i> ATCC 29532, <i>A.actinomycetemcomitans</i> NCTC 9709, <i>A.actinomycetemcomitans</i> FDC-Y4, <i>H.aphrophilus</i> ATCC 13252, <i>E.corrodens</i> ATCC 23834, <i>C.sputigena</i> ATCC 33123, <i>Capnocytophaga</i> sp ATCC 33124, <i>Capnocytophaga</i> sp ATCC 27872 or <i>E.coli</i> ML-35. Has antibacterial activity against <i>C.sputigena</i> ATCC 33123 when acting synergistically with either elastase or cathepsin G.</p>


[View online »](#)

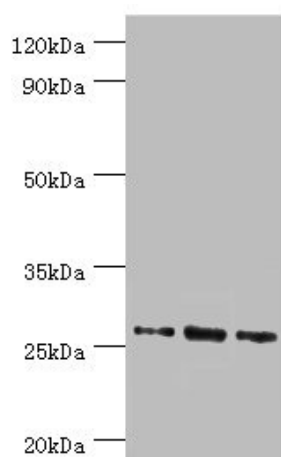
## Product images:



Immunohistochemistry of paraffin-embedded human placenta tissue using [TA387147] at dilution of 1:100



Immunohistochemistry of paraffin-embedded human colon tissue using [TA387147] at dilution of 1:100



Western blot

All lanes: Azurocidin antibody at 1 $\mu$ g/ml

Lane 1: 293T whole cell lysate

Lane 2: Mouse spleen tissue

Lane 3: Mouse thymus tissue

Secondary

Goat polyclonal to rabbit IgG at 1/10000 dilution

Predicted band size: 27 kDa

Observed band size: 27 kDa