

Product datasheet for **TA387147**

AZU1 Rabbit Polyclonal Antibody

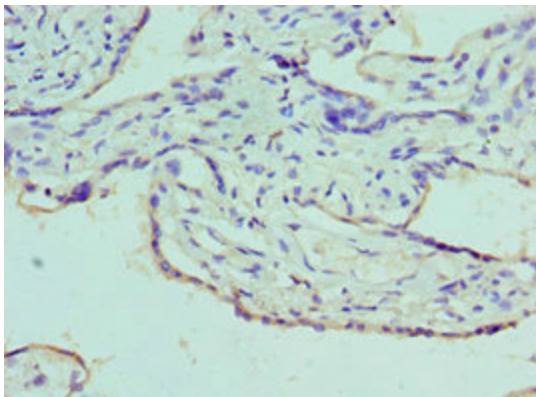
Product data:

Product Type:	Primary Antibodies
Applications:	IHC, WB
Recommended Dilution:	Recommended dilution: WB:1:500-1:2000, IHC:1:20-1:200
Reactivity:	Mouse, Human
Host:	Rabbit
Isotype:	IgG
Clonality:	Polyclonal
Immunogen:	Recombinant Human Azurocidin protein (27-251AA)
Formulation:	PBS with 0.02% sodium azide, 50% glycerol, pH7.3.
Concentration:	lot specific
Purification:	Antigen Affinity purified
Conjugation:	Unconjugated
Storage:	Upon receipt, store at -20°C or -80°C. Avoid repeated freeze.
Stability:	1 year from dispatch.
Database Link:	P20160

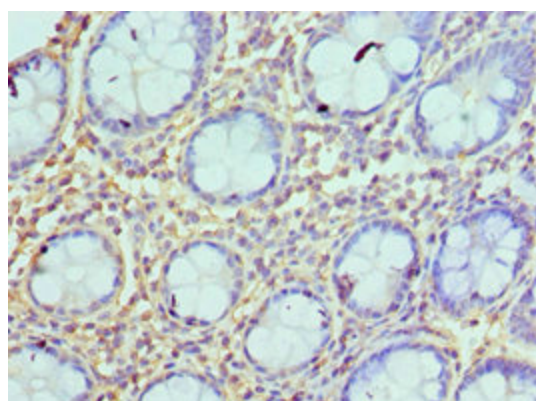
Background: This is a neutrophil granule-derived antibacterial and monocyte- and fibroblast-specific chemotactic glycoprotein. Binds heparin. The cytotoxic action is limited to many species of Gram-negative bacteria; this specificity may be explained by a strong affinity of the very basic N-terminal half for the negatively charged lipopolysaccharides that are unique to the Gram-negative bacterial outer envelope. It may play a role in mediating recruitment of monocytes in the second wave of inflammation. Has antibacterial activity against the Gram-negative bacterium *P.aeruginosa*, this activity is inhibited by LPS from *P.aeruginosa*. Acting alone, it does not have antimicrobial activity against the Gram-negative bacteria *A.actinomycetemcomitans* ATCC 29532, *A.actinomycetemcomitans* NCTC 9709, *A.actinomycetemcomitans* FDC-Y4, *H.aphrophilus* ATCC 13252, *E.corrodens* ATCC 23834, *C.sputigena* ATCC 33123, *Capnocytophaga* sp ATCC 33124, *Capnocytophaga* sp ATCC 27872 or *E.coli* ML-35. Has antibacterial activity against *C.sputigena* ATCC 33123 when acting synergistically with either elastase or cathepsin G.



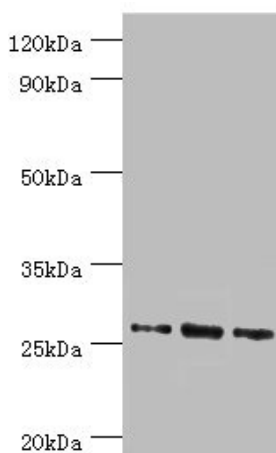
[View online »](#)

Product images:


Immunohistochemistry of paraffin-embedded human placenta tissue using TA387147 at dilution of 1:100



Immunohistochemistry of paraffin-embedded human colon tissue using TA387147 at dilution of 1:100


Western blot

All lanes: Azurocidin antibody at 1 µg/ml

Lane 1: 293T whole cell lysate

Lane 2: Mouse spleen tissue

Lane 3: Mouse thymus tissue

Secondary

Goat polyclonal to rabbit IgG at 1/10000 dilution

Predicted band size: 27 kDa

Observed band size: 27 kDa