

## Product datasheet for **TA387144**

### CYTH2 Rabbit Polyclonal Antibody

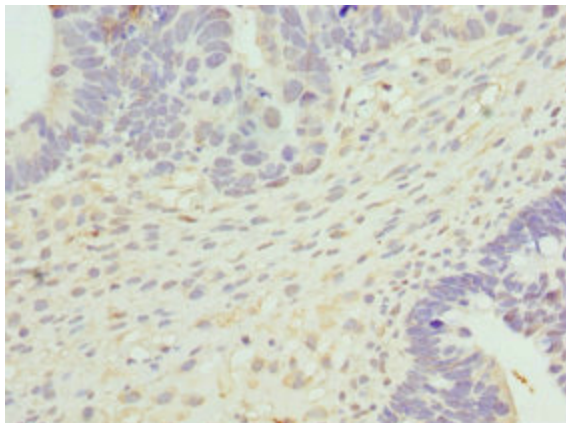
#### Product data:

Product Type:	Primary Antibodies
Applications:	IHC, WB
Recommended Dilution:	Recommended dilution: WB:1:1000-1:5000, IHC:1:20-1:200
Reactivity:	Human
Host:	Rabbit
Isotype:	IgG
Clonality:	Polyclonal
Immunogen:	Recombinant Human Cytohesin-2 protein (150-350AA)
Formulation:	PBS with 0.02% sodium azide, 50% glycerol, pH7.3.
Concentration:	lot specific
Purification:	Antigen Affinity Purified
Conjugation:	Unconjugated
Storage:	Upon receipt, store at -20°C or -80°C. Avoid repeated freeze.
Stability:	1 year from dispatch.
Database Link:	<a href="#">Q99418</a>
Background:	Acts as a guanine-nucleotide exchange factor (GEF). Promotes guanine-nucleotide exchange on ARF1, ARF3 and ARF6. Promotes the activation of ARF factors through replacement of GDP with GTP. The cell membrane form, in association with ARL4 proteins, recruits ARF6 to the plasma membrane. Involved in neurite growth (By similarity).

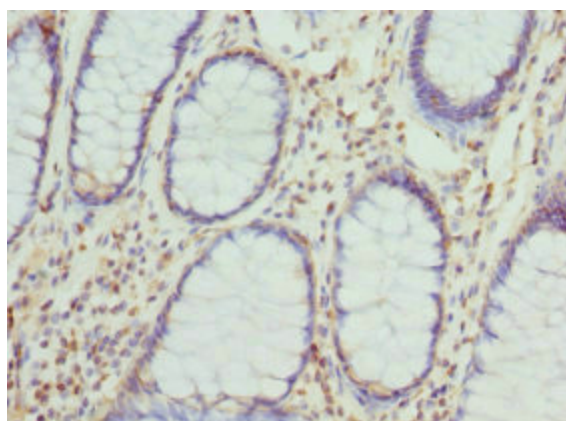


[View online »](#)

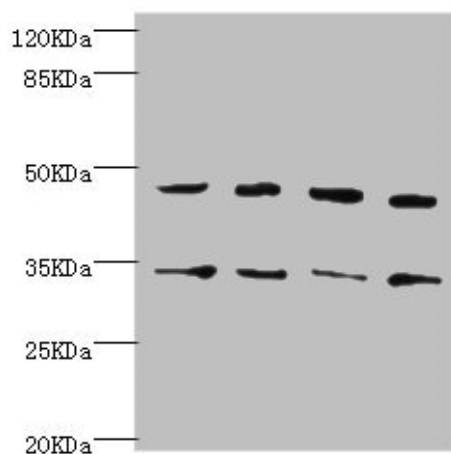
**Product images:**



Immunohistochemistry of paraffin-embedded human ovarian cancer using TA387144 at dilution of 1:100



Immunohistochemistry of paraffin-embedded human colon cancer using TA387144 at dilution of 1:100



## Western blot

All lanes: CYTH2 antibody at 5.58 $\mu$ g/ml

Lane 1: U251 whole cell lysate

Lane 2: HepG2 whole cell lysate

Lane 3: MCF-7 whole cell lysate

Lane 4: A549 whole cell lysate

Secondary

Goat polyclonal to rabbit IgG at 1/10000 dilution

Predicted band size: 47 kDa

Observed band size: 47, 35 kDa