

Product datasheet for **TA387141M**

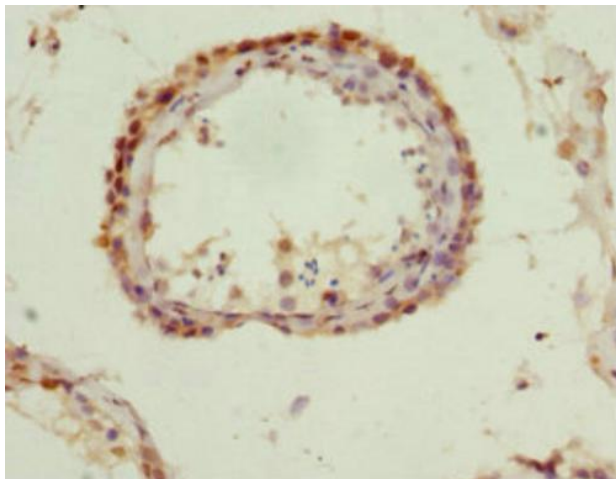
QKI Rabbit Polyclonal Antibody

Product data:

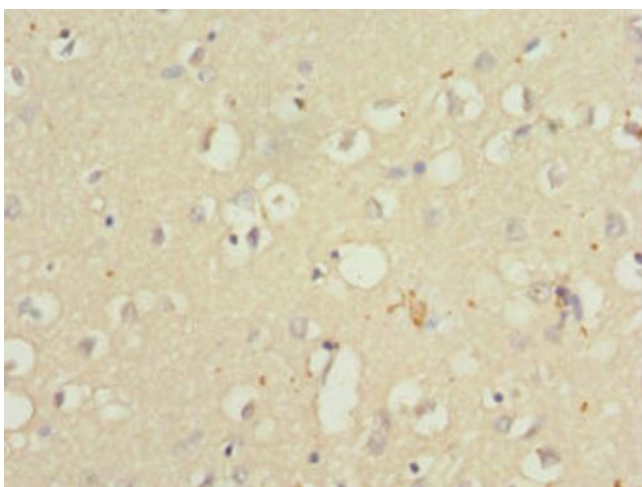
Product Type:	Primary Antibodies
Applications:	IHC, WB
Recommended Dilution:	Recommended dilution: WB:1:1000-1:5000, IHC:1:20-1:200
Reactivity:	Human
Host:	Rabbit
Isotype:	IgG
Clonality:	Polyclonal
Immunogen:	Recombinant Human Protein quaking protein (1-341AA)
Formulation:	PBS with 0.02% sodium azide, 50% glycerol, pH7.3.
Concentration:	lot specific
Purification:	Antigen Affinity Purified
Conjugation:	Unconjugated
Storage:	Upon receipt, store at -20°C or -80°C. Avoid repeated freeze.
Stability:	1 year from dispatch.
Database Link:	Q96PU8
Background:	RNA-binding protein that plays a central role in myelination (PubMed:16641098). Binds to the 5'-NACUAAAY-N(1,20)-UAAY-3' RNA core sequence. Regulates target mRNA stability (PubMed:23630077). In addition, acts by regulating pre-mRNA splicing, mRNA export and protein translation. Required to protect and promote stability of mRNAs such as MBP and CDKN1B. Regulator of oligodendrocyte differentiation and maturation in the brain that may play a role in myelin and oligodendrocyte dysfunction in schizophrenia (PubMed:16641098). Participates in mRNA transport by regulating the nuclear export of MBP mRNA. Also involved in regulation of mRNA splicing of MAG pre-mRNA. Acts as a translational repressor (By similarity).


[View online »](#)

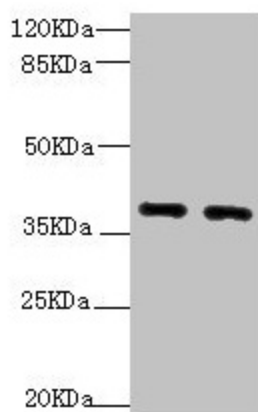
Product images:



Immunohistochemistry of paraffin-embedded human testis tissue using [TA387141] at dilution of 1:100



Immunohistochemistry of paraffin-embedded human brain tissue using [TA387141] at dilution of 1:100



Western blot

All lanes: QKI antibody at 1.92µg/ml

Lane 1: HL60 whole cell lysate

Lane 2: K562 whole cell lysate

Secondary

Goat polyclonal to rabbit IgG at 1/10000 dilution

Predicted band size: 38, 37, 36 kDa

Observed band size: 38, 70 kDa