

## Product datasheet for **TA387140M**

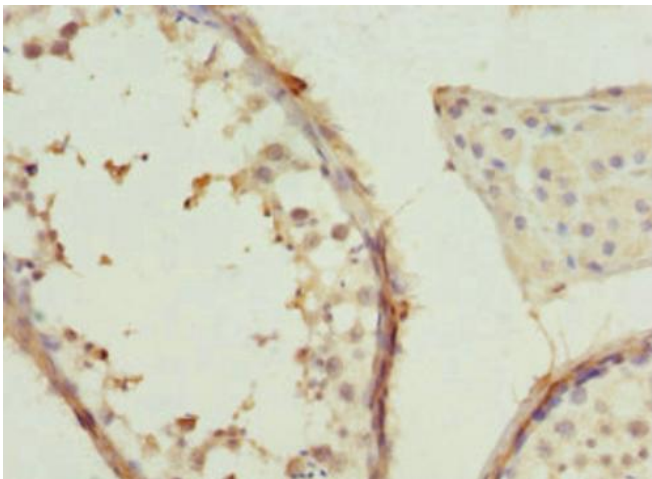
### CCT2 Rabbit Polyclonal Antibody

#### Product data:

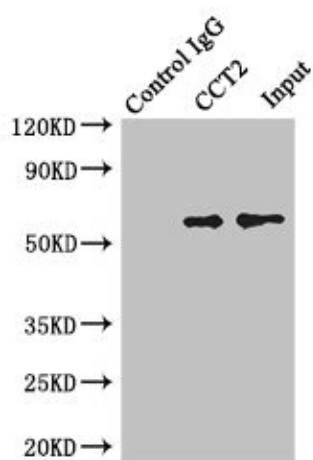
Product Type:	Primary Antibodies
Applications:	IHC, IP, WB
Recommended Dilution:	Recommended dilution: WB:1:1000-1:5000, IHC:1:20-1:200, IP:1:200-1:2000
Reactivity:	Human
Host:	Rabbit
Isotype:	IgG
Clonality:	Polyclonal
Immunogen:	Recombinant Human T-complex protein 1 subunit beta protein (206-535AA)
Formulation:	PBS with 0.02% sodium azide, 50% glycerol, pH7.3.
Concentration:	lot specific
Purification:	Antigen Affinity Purified
Conjugation:	Unconjugated
Storage:	Upon receipt, store at -20°C or -80°C. Avoid repeated freeze.
Stability:	1 year from dispatch.
Database Link:	<a href="#">P78371</a>
Background:	Molecular chaperone; assists the folding of proteins upon ATP hydrolysis. As part of the BBS/CCT complex may play a role in the assembly of BBSome, a complex involved in ciliogenesis regulating transports vesicles to the cilia. Known to play a role, in vitro, in the folding of actin and tubulin.

[View online »](#)

## Product images:



Immunohistochemistry of paraffin-embedded human testis tissue using [TA387140] at dilution of 1:100

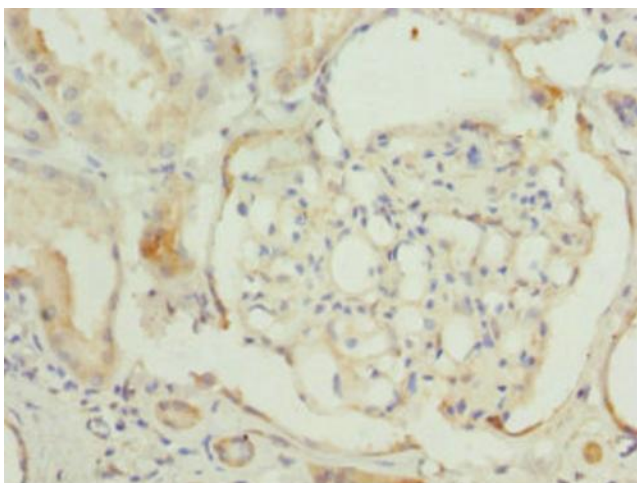


Immunoprecipitating CCT2 in Jurkat whole cell lysate

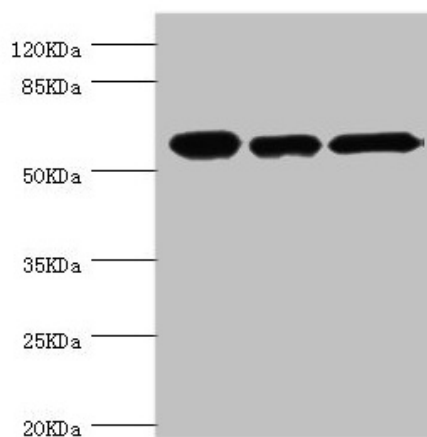
Lane 1: Rabbit control IgG instead of (1µg) instead of [TA387140] in Jurkat whole cell lysate. For western blotting, a HRP-conjugated light chain specific antibody was used as the Secondary antibody (1/50000)

Lane 2: [TA387140] (4µg) + Jurkat whole cell lysate (500µg)

Lane 3: Jurkat whole cell lysate (20µg)



Immunohistochemistry of paraffin-embedded human kidney tissue using [TA387140] at dilution of 1:100



#### Western blot

All lanes: CCT2 antibody at 5.63µg/ml

Lane 1: Jurkat whole cell lysate

Lane 2: NIH/3T3 whole cell lysate

Lane 3: MCF-7 whole cell lysate

Secondary

Goat polyclonal to rabbit IgG at 1/10000 dilution

Predicted band size: 58, 53 kDa

Observed band size: 58 kDa