

Product datasheet for **TA387138M**

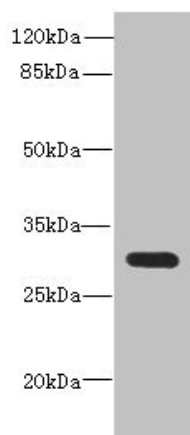
CD200 Rabbit Polyclonal Antibody

Product data:

Product Type:	Primary Antibodies
Applications:	WB
Recommended Dilution:	Recommended dilution: WB:1:1000-1:5000
Reactivity:	Mouse, Human
Host:	Rabbit
Isotype:	IgG
Clonality:	Polyclonal
Immunogen:	Recombinant Human OX-2 membrane glycoprotein protein (30-240AA)
Formulation:	PBS with 0.02% sodium azide, 50% glycerol, pH7.3.
Concentration:	lot specific
Purification:	Antigen Affinity Purified
Conjugation:	Unconjugated
Storage:	Upon receipt, store at -20°C or -80°C. Avoid repeated freeze.
Stability:	1 year from dispatch.
Database Link:	P41217
Background:	Costimulates T-cell proliferation. May regulate myeloid cell activity in a variety of tissues.



[View online »](#)

Product images:


Western blot
 All lanes: CD200antibody at 0.71µg/ml + Mouse
 kidney tissue
 Secondary
 Goat polyclonal to rabbit IgG at 1/10000 dilution
 Predicted band size: 32, 31, 33 kDa
 Observed band size: 32 kDa