

Product datasheet for **TA387134M**

YME1L1 Rabbit Polyclonal Antibody

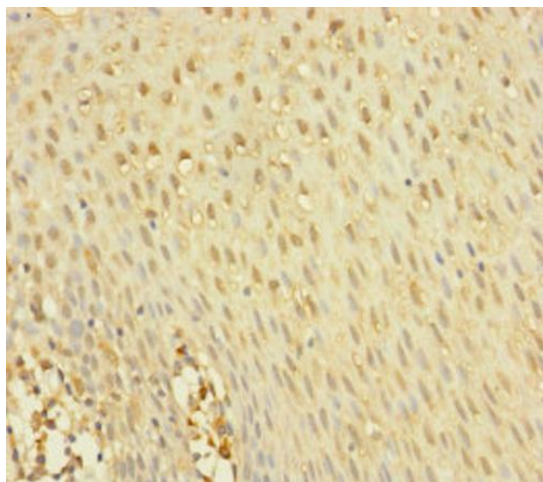
Product data:

Product Type:	Primary Antibodies
Applications:	IHC, WB
Recommended Dilution:	Recommended dilution: WB:1:1000-1:5000, IHC:1:20-1:200
Reactivity:	Human
Host:	Rabbit
Isotype:	IgG
Clonality:	Polyclonal
Immunogen:	Recombinant Human ATP-dependent zinc metalloprotease YME1L1 protein (1-240AA)
Formulation:	PBS with 0.02% sodium azide, 50% glycerol, pH7.3.
Concentration:	lot specific
Purification:	Antigen Affinity Purified
Conjugation:	Unconjugated
Storage:	Upon receipt, store at -20°C or -80°C. Avoid repeated freeze.
Stability:	1 year from dispatch.
Database Link:	Q96TA2
Background:	Putative ATP-dependent protease which plays a role in mitochondrial protein metabolism. Ensures cell proliferation, maintains normal cristae morphology and complex I respiration activity, promotes antiapoptotic activity and protects mitochondria from the accumulation of oxidatively damaged membrane proteins. Requires to control the accumulation of nonassembled respiratory chain subunits (NDUFB6, OX4 and ND1). Seems to act in the processing of OPA1.

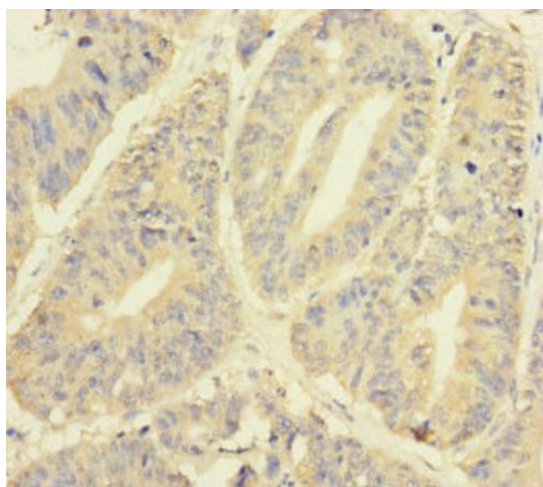


[View online »](#)

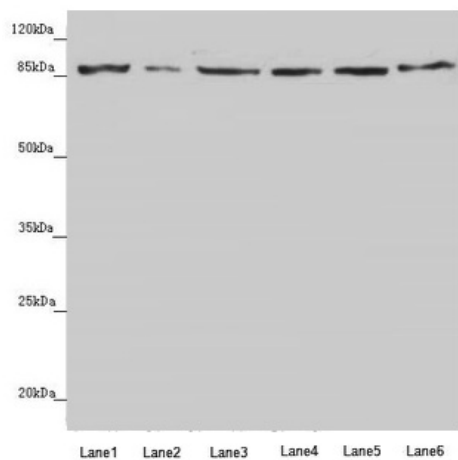
Product images:



Immunohistochemistry of paraffin-embedded human tonsil tissue using [TA387134] at dilution of 1:100



Immunohistochemistry of paraffin-embedded human colon cancer using [TA387134] at dilution of 1:100



Western blot

All lanes: YME1L1 antibody at 3.8µg/ml

Lane 1: A549 whole cell lysate

Lane 2: Jurkat whole cell lysate

Lane 3: A431 whole cell lysate

Lane 4: Hela whole cell lysate

Lane 5: HepG2 whole cell lysate

Lane 6: MCF-7 whole cell lysate

Secondary

Goat polyclonal to rabbit IgG at 1/10000 dilution

Predicted band size: 87, 80, 76 kDa

Observed band size: 87 kDa