

## Product datasheet for **TA387127M**

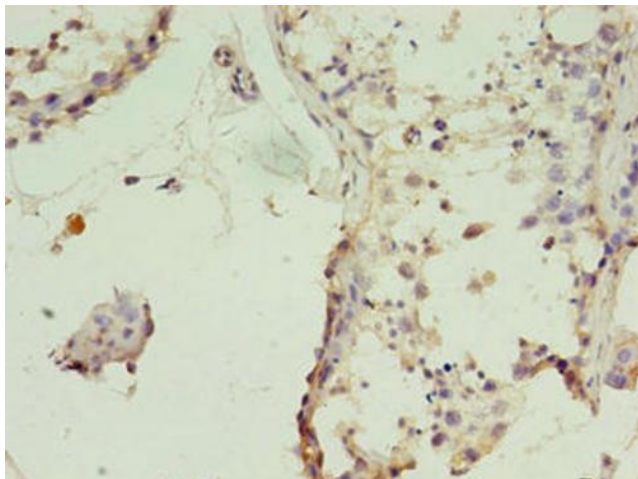
### **TIMM10B Rabbit Polyclonal Antibody**

#### **Product data:**

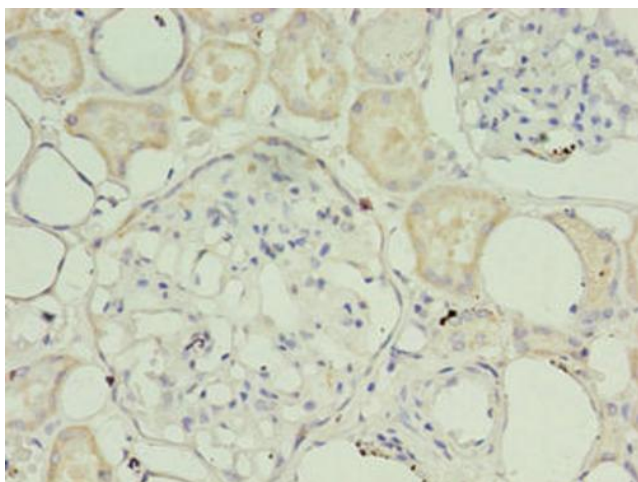
Product Type:	Primary Antibodies
Applications:	IHC, WB
Recommended Dilution:	Recommended dilution: WB:1:1000-1:5000, IHC:1:20-1:200
Reactivity:	Mouse, Human
Host:	Rabbit
Isotype:	IgG
Clonality:	Polyclonal
Immunogen:	Recombinant Human Mitochondrial import inner membrane translocase subunit Tim10 B protein (1-103AA)
Formulation:	Preservative: 0.03% Proclin 300 Constituents: 50% Glycerol, 0.01M PBS, PH 7.4
Concentration:	lot specific
Purification:	>95%, Protein G purified
Conjugation:	Unconjugated
Storage:	Upon receipt, store at -20°C or -80°C. Avoid repeated freeze.
Stability:	1 year from dispatch.
Database Link:	<a href="#">Q9Y5J6</a>
Background:	Component of the TIM22 complex, a complex that mediates the import and insertion of multi-pass transmembrane proteins into the mitochondrial inner membrane. The TIM22 complex forms a twin-pore translocase that uses the membrane potential as the external driving force. In the TIM22 complex, it may act as a docking point for the soluble 70 kDa complex that guides the target proteins in transit through the aqueous mitochondrial intermembrane space.

[View online »](#)

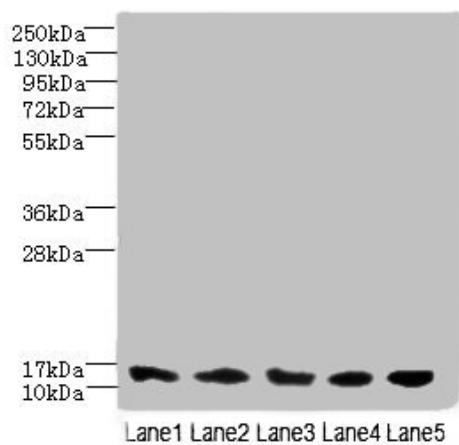
**Product images:**



Immunohistochemistry of paraffin-embedded human testis tissue using [TA387127] at dilution of 1:100



Immunohistochemistry of paraffin-embedded human kidney tissue using [TA387127] at dilution of 1:100



Western blot

All lanes: TIMM10B antibody at 4 $\mu$ g/ml

Lane 1: Hela whole cell lysate

Lane 2: 293T whole cell lysate

Lane 3: HepG2 whole cell lysate

Lane 4: K562 whole cell lysate

Lane 5: Mouse heart tissue

Secondary

Goat polyclonal to rabbit IgG at 1/10000 dilution

Predicted band size: 12 kDa

Observed band size: 12 kDa