

## Product datasheet for **TA387127**

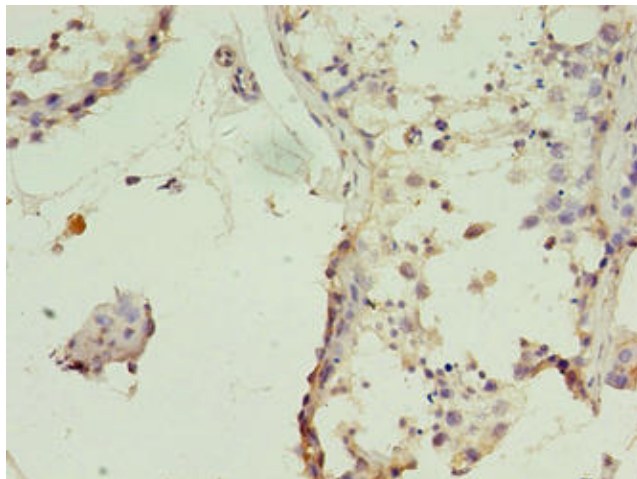
### **TIMM10B Rabbit Polyclonal Antibody**

#### **Product data:**

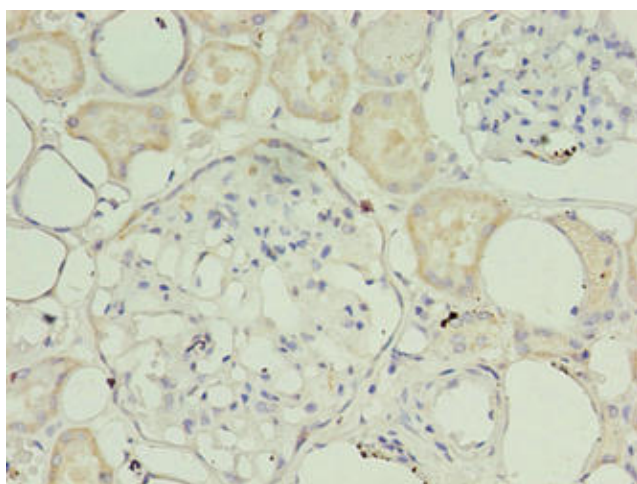
<b>Product Type:</b>	Primary Antibodies
<b>Applications:</b>	IHC, WB
<b>Recommended Dilution:</b>	Recommended dilution: WB:1:1000-1:5000, IHC:1:20-1:200
<b>Reactivity:</b>	Mouse, Human
<b>Host:</b>	Rabbit
<b>Isotype:</b>	IgG
<b>Clonality:</b>	Polyclonal
<b>Immunogen:</b>	Recombinant Human Mitochondrial import inner membrane translocase subunit Tim10 B protein (1-103AA)
<b>Formulation:</b>	Preservative: 0.03% Proclin 300 Constituents: 50% Glycerol, 0.01M PBS, PH 7.4
<b>Concentration:</b>	lot specific
<b>Purification:</b>	>95%, Protein G purified
<b>Conjugation:</b>	Unconjugated
<b>Storage:</b>	Upon receipt, store at -20°C or -80°C. Avoid repeated freeze.
<b>Stability:</b>	1 year from dispatch.
<b>Database Link:</b>	<a href="#">Q9Y5J6</a>
<b>Background:</b>	Component of the TIM22 complex, a complex that mediates the import and insertion of multi-pass transmembrane proteins into the mitochondrial inner membrane. The TIM22 complex forms a twin-pore translocase that uses the membrane potential as the external driving force. In the TIM22 complex, it may act as a docking point for the soluble 70 kDa complex that guides the target proteins in transit through the aqueous mitochondrial intermembrane space.



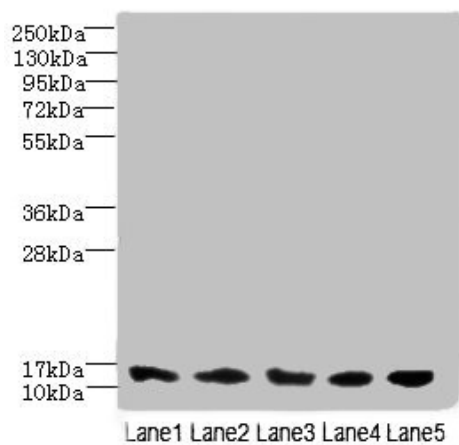
[View online »](#)

**Product images:**

Immunohistochemistry of paraffin-embedded human testis tissue using TA387127 at dilution of 1:100



Immunohistochemistry of paraffin-embedded human kidney tissue using TA387127 at dilution of 1:100



#### Western blot

All lanes: TIMM10B antibody at 4 $\mu$ g/ml

Lane 1: HeLa whole cell lysate

Lane 2: 293T whole cell lysate

Lane 3: HepG2 whole cell lysate

Lane 4: K562 whole cell lysate

Lane 5: Mouse heart tissue

Secondary

Goat polyclonal to rabbit IgG at 1/10000 dilution

Predicted band size: 12 kDa

Observed band size: 12 kDa