

Product datasheet for **TA387122**

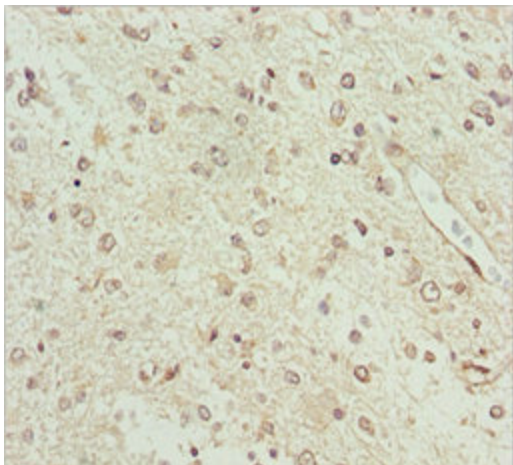
BCS1L Rabbit Polyclonal Antibody

Product data:

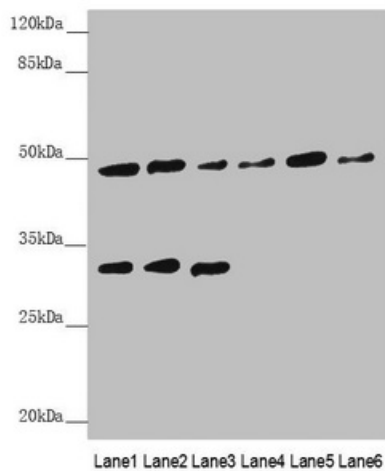
Product Type:	Primary Antibodies
Applications:	IHC, WB
Recommended Dilution:	Recommended dilution: WB:1:1000-1:5000, IHC:1:20-1:200
Reactivity:	Mouse, Human
Host:	Rabbit
Isotype:	IgG
Clonality:	Polyclonal
Immunogen:	Recombinant Human Mitochondrial chaperone BCS1 protein (33-240AA)
Formulation:	PBS with 0.02% sodium azide, 50% glycerol, pH7.3.
Concentration:	lot specific
Purification:	Antigen Affinity Purified
Conjugation:	Unconjugated
Storage:	Upon receipt, store at -20°C or -80°C. Avoid repeated freeze.
Stability:	1 year from dispatch.
Database Link:	Q9Y276
Background:	Chaperone necessary for the assembly of mitochondrial respiratory chain complex III. Plays an important role in the maintenance of mitochondrial tubular networks, respiratory chain assembly and formation of the LETM1 complex.



[View online »](#)

Product images:

Immunohistochemistry of paraffin-embedded human glioma using TA387122 at dilution of 1:100



Western blot

All lanes: BCS1L antibody at 5.04 $\mu\text{g/ml}$

Lane 1: Mouse kidney tissue

Lane 2: Mouse liver tissue

Lane 3: Mouse brain tissue

Lane 4: A549 whole cell lysate

Lane 5: 293T whole cell lysate

Lane 6: Hela whole cell lysate

Secondary

Goat polyclonal to rabbit IgG at 1/10000 dilution

Predicted band size: 48 kDa

Observed band size: 48, 30 kDa