

Product datasheet for **TA387118M**

EXOC7 Rabbit Polyclonal Antibody

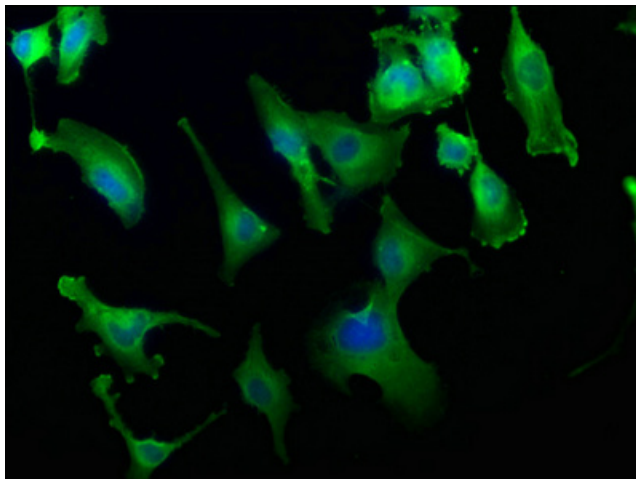
Product data:

Product Type:	Primary Antibodies
Applications:	IF, IHC, WB
Recommended Dilution:	Recommended dilution: WB:1:1000-1:5000, IHC:1:500-1:1000, IF:1:50-1:200
Reactivity:	Human
Host:	Rabbit
Isotype:	IgG
Clonality:	Polyclonal
Immunogen:	Recombinant Human Exocyst complex component 7 protein (521-735AA)
Formulation:	Preservative: 0.03% Proclin 300 Constituents: 50% Glycerol, 0.01M PBS, pH 7.4
Concentration:	lot specific
Purification:	>95%, Protein G purified
Conjugation:	Unconjugated
Storage:	Upon receipt, store at -20°C or -80°C. Avoid repeated freeze.
Stability:	1 year from dispatch.
Database Link:	Q9UPT5
Background:	Component of the exocyst complex involved in the docking of exocytic vesicles with fusion sites on the plasma membrane. In adipocytes, plays a crucial role in targeting SLC2A4 vesicle to the plasma membrane in response to insulin, perhaps directing the vesicle to the precise site of fusion (By similarity).

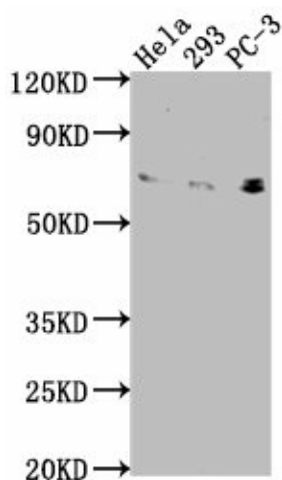


[View online »](#)

Product images:



Immunofluorescence staining of U251 cells with [TA387118] at 1:186, counter-stained with DAPI. The cells were fixed in 4% formaldehyde, permeabilized using 0.2% Triton X-100 and blocked in 10% normal Goat Serum. The cells were then incubated with the antibody overnight at 4°C. The secondary antibody was Alexa Fluor 488-conjugated AffiniPure Goat Anti-Rabbit IgG(H+L).



Western Blot

Positive WB detected in: HeLa whole cell lysate, 293 whole cell lysate, PC-3 whole cell lysate

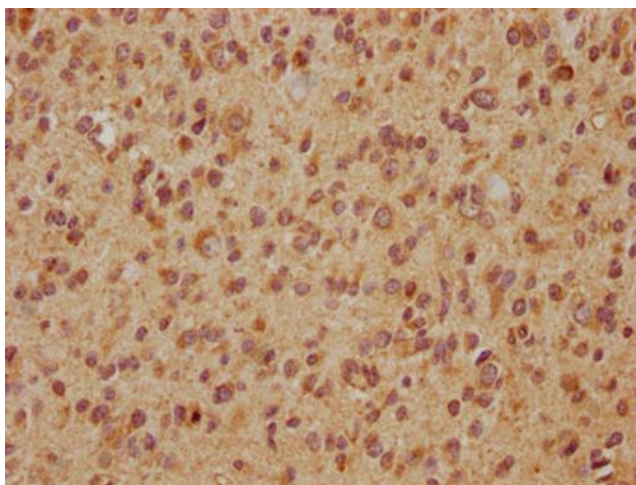
All lanes: EXOC7 antibody at 1:2000

Secondary

Goat polyclonal to rabbit IgG at 1/50000 dilution

Predicted band size: 84, 79, 75, 33, 78, 81 kDa

Observed band size: 75 kDa



IHC image of [TA387118] diluted at 1:560 and staining in paraffin-embedded human glioma cancer performed on a Leica Bond™ system. After dewaxing and hydration, antigen retrieval was mediated by high pressure in a citrate buffer (pH 6.0). Section was blocked with 10% normal goat serum 30min at RT. Then primary antibody (1% BSA) was incubated at 4°C overnight. The primary is detected by a biotinylated secondary antibody and visualized using an HRP conjugated SP system.