

Product datasheet for **TA387110M**

BCAP29 Rabbit Polyclonal Antibody

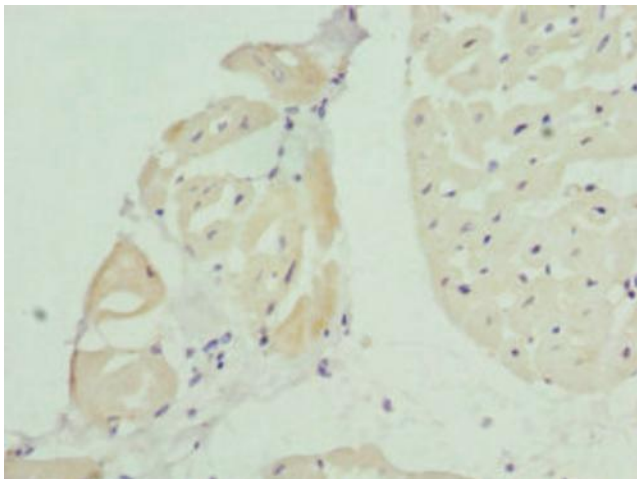
Product data:

Product Type:	Primary Antibodies
Applications:	IHC, WB
Recommended Dilution:	Recommended dilution: WB:1:1000-1:5000, IHC:1:20-1:200
Reactivity:	Rat, Human
Host:	Rabbit
Isotype:	IgG
Clonality:	Polyclonal
Immunogen:	Recombinant Human B-cell receptor-associated protein 29 protein (125-241AA)
Formulation:	PBS with 0.02% sodium azide, 50% glycerol, pH7.3.
Concentration:	lot specific
Purification:	Antigen Affinity Purified
Conjugation:	Unconjugated
Storage:	Upon receipt, store at -20°C or -80°C. Avoid repeated freeze.
Stability:	1 year from dispatch.
Database Link:	Q9UHQ4
Background:	May play a role in anterograde transport of membrane proteins from the endoplasmic reticulum to the Golgi. May be involved in CASP8-mediated apoptosis (By similarity).

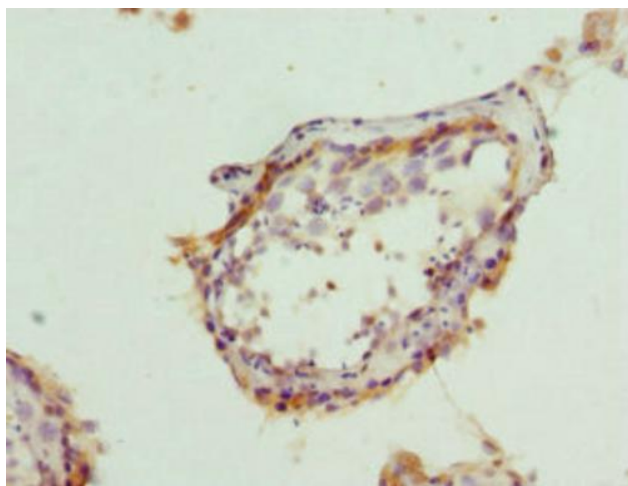


[View online »](#)

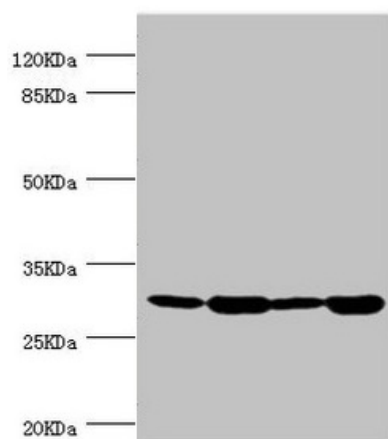
Product images:



Immunohistochemistry of paraffin-embedded human heart tissue using [TA387110] at dilution of 1:100



Immunohistochemistry of paraffin-embedded human testis tissue using [TA387110] at dilution of 1:100



Western blot

All lanes: BCAP29 antibody at 2.93 μ g/ml

Lane 1: Raji whole cell lysate

Lane 2: Colo320 whole cell lysate

Lane 3: Rat gonad tissue

Lane 4: THP-1 whole cell lysate

Secondary

Goat polyclonal to rabbit IgG at 1/10000 dilution

Predicted band size: 29, 41 kDa

Observed band size: 29 kDa