

Product datasheet for **TA387105**

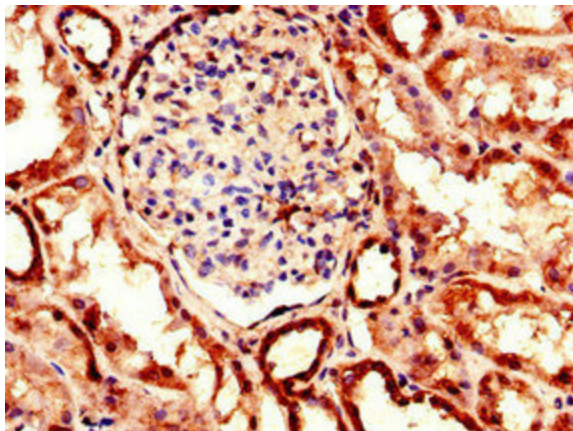
EHD2 Rabbit Polyclonal Antibody

Product data:

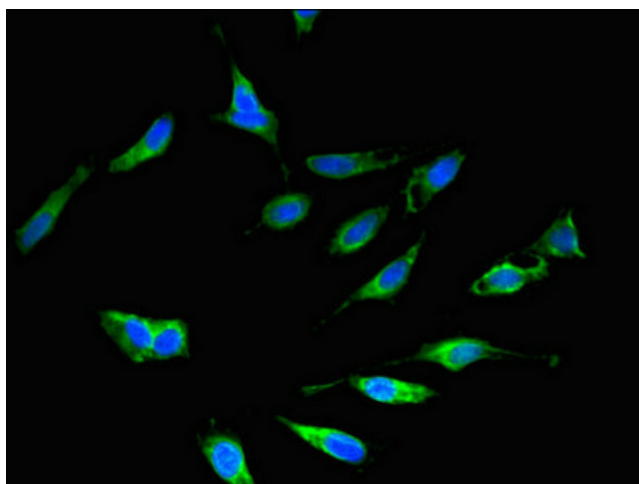
Product Type:	Primary Antibodies
Applications:	IF, IHC, WB
Recommended Dilution:	Recommended dilution: WB:1:500-1:5000, IHC:1:20-1:200, IF:1:50-1:200
Reactivity:	Mouse, Human
Host:	Rabbit
Isotype:	IgG
Clonality:	Polyclonal
Immunogen:	Recombinant Human EH domain-containing protein 2 protein (401-543AA)
Formulation:	Preservative: 0.03% Proclin 300 Constituents: 50% Glycerol, 0.01M PBS, PH 7.4
Concentration:	lot specific
Purification:	>95%, Protein G purified
Conjugation:	Unconjugated
Storage:	Upon receipt, store at -20°C or -80°C. Avoid repeated freeze.
Stability:	1 year from dispatch.
Database Link:	Q9NZN4
Background:	ATP- and membrane-binding protein that controls membrane reorganization/tubulation upon ATP hydrolysis (By similarity). Plays a role in membrane trafficking between the plasma membrane and endosomes (PubMed:17233914). Important for the internalization of GLUT4. Required for fusion of myoblasts to skeletal muscle myotubes. Required for normal translocation of FER1L5 to the plasma membrane (By similarity).



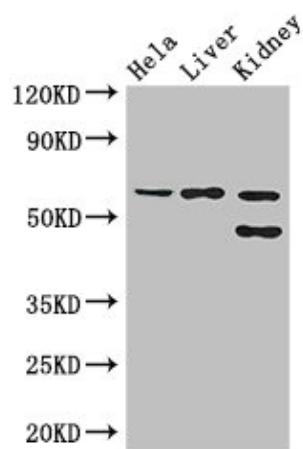
[View online »](#)

Product images:

Immunohistochemistry of paraffin-embedded human kidney tissue using TA387105 at dilution of 1:100



Immunofluorescent analysis of HeLa cells using TA387105 at dilution of 1:100 and Alexa Fluor 488-conjugated AffiniPure Goat Anti-Rabbit IgG(H+L)



Western Blot

Positive WB detected in: HeLa whole cell lysate,
Mouse liver tissue, Mouse kidney tissue

All lanes: EHD2 antibody at 3 μ g/ml

Secondary

Goat polyclonal to rabbit IgG at 1/50000 dilution

Predicted band size: 62, 47 kDa

Observed band size: 62, 47 kDa