

## Product datasheet for **TA387104M**

### BTG4 Rabbit Polyclonal Antibody

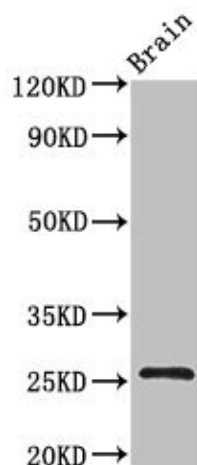
#### Product data:

Product Type:	Primary Antibodies
Applications:	IHC, WB
Recommended Dilution:	Recommended dilution: WB:1:500-1:5000, IHC:1:20-1:200
Reactivity:	Mouse, Human
Host:	Rabbit
Isotype:	IgG
Clonality:	Polyclonal
Immunogen:	Recombinant Human Protein BTG4 protein (1-206AA)
Formulation:	Preservative: 0.03% Proclin 300 Constituents: 50% Glycerol, 0.01M PBS, PH 7.4
Concentration:	lot specific
Purification:	>95%, Protein G purified
Conjugation:	Unconjugated
Storage:	Upon receipt, store at -20°C or -80°C. Avoid repeated freeze.
Stability:	1 year from dispatch.
Database Link:	<a href="#">Q9NY30</a>
Background:	Shows marked antiproliferative activity, being able to induce G(1) arrest.



[View online »](#)

## Product images:



Western Blot

Positive WB detected in: Mouse brain tissue

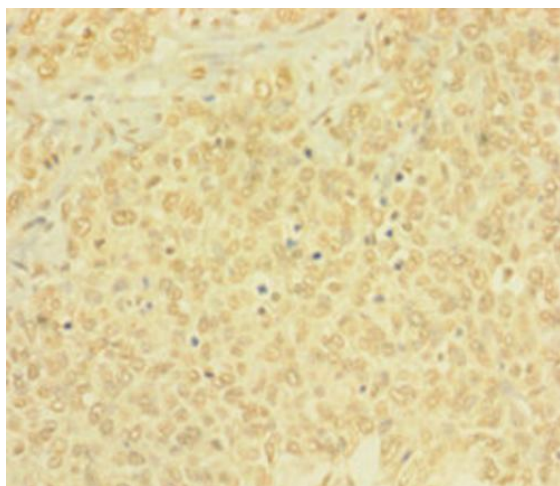
All lanes: BTG4 antibody at 3µg/ml

Secondary

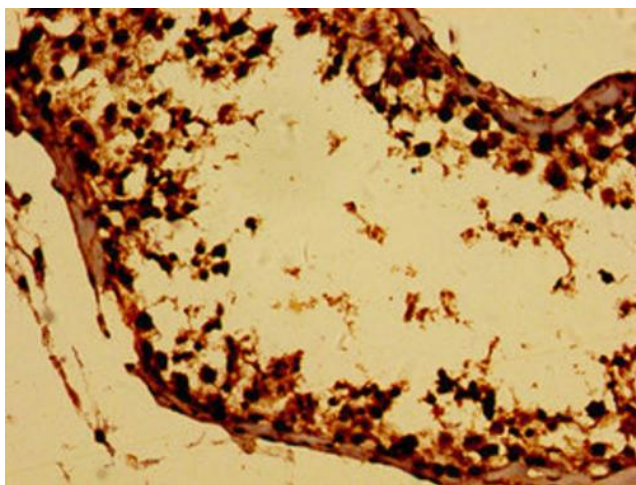
Goat polyclonal to rabbit IgG at 1/50000 dilution

Predicted band size: 26, 25 kDa

Observed band size: 26 kDa



Immunohistochemistry of paraffin-embedded human ovarian cancer using [TA387104] at dilution of 1: 100



Immunohistochemistry of paraffin-embedded human testis tissue using [TA387104] at dilution of 1:100