

## Product datasheet for **TA387100M**

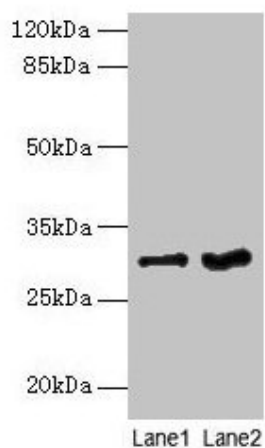
### **FGFR1OP2 Rabbit Polyclonal Antibody**

#### **Product data:**

Product Type:	Primary Antibodies
Applications:	WB
Recommended Dilution:	Recommended dilution: WB:1:1000-1:5000
Reactivity:	Mouse, Human
Host:	Rabbit
Isotype:	IgG
Clonality:	Polyclonal
Immunogen:	Recombinant Human FGFR1 oncogene partner 2 protein (1-172AA)
Formulation:	Preservative: 0.03% Proclin 300 Constituents: 50% Glycerol, 0.01M PBS, PH 7.4
Concentration:	lot specific
Purification:	>95%, Protein G purified
Conjugation:	Unconjugated
Storage:	Upon receipt, store at -20°C or -80°C. Avoid repeated freeze.
Stability:	1 year from dispatch.
Database Link:	<a href="#">Q9NVK5</a>
Background:	May be involved in wound healing pathway.



[View online »](#)

**Product images:**


Western blot

All lanes: FGFR1OP2 antibody at 6µg/ml

Lane 1: Mouse gonadal tissue

Lane 2: Human placenta tissue

Secondary

Goat polyclonal to rabbit IgG at 1/10000 dilution

Predicted band size: 30, 25, 21 kDa

Observed band size: 30 kDa