

Product datasheet for **TA387099M**

ARHGEF3 Rabbit Polyclonal Antibody

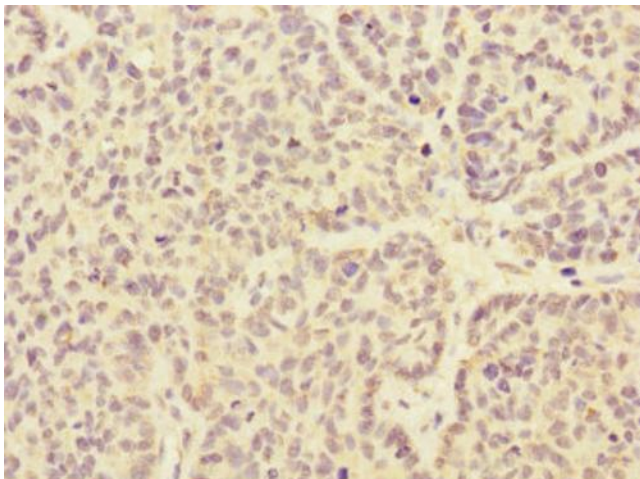
Product data:

| | |
|-----------------------|--|
| Product Type: | Primary Antibodies |
| Applications: | IHC, WB |
| Recommended Dilution: | Recommended dilution: WB:1:1000-1:5000, IHC:1:20-1:200 |
| Reactivity: | Human |
| Host: | Rabbit |
| Isotype: | IgG |
| Clonality: | Polyclonal |
| Immunogen: | Recombinant Human Rho guanine nucleotide exchange factor 3 protein (287-526AA) |
| Formulation: | PBS with 0.02% sodium azide, 50% glycerol, pH7.3. |
| Concentration: | lot specific |
| Purification: | Antigen Affinity Purified |
| Conjugation: | Unconjugated |
| Storage: | Upon receipt, store at -20°C or -80°C. Avoid repeated freeze. |
| Stability: | 1 year from dispatch. |
| Database Link: | Q9NR81 |
| Background: | Acts as guanine nucleotide exchange factor (GEF) for RhoA and RhoB GTPases. |

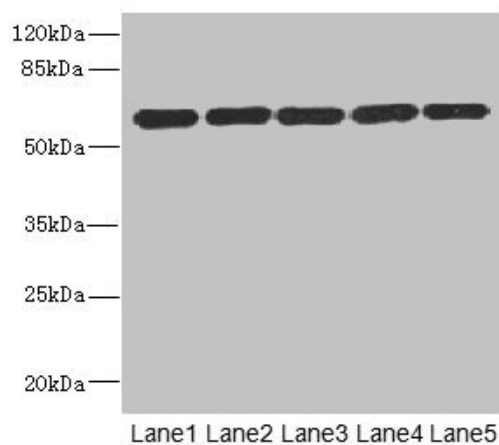


[View online »](#)

Product images:



Immunohistochemistry of paraffin-embedded human ovarian cancer using [TA387099] at dilution of 1:100



Western blot
All lanes: ARHGEF3 antibody at 2.21µg/ml
Lane 1: MCF-7 whole cell lysate
Lane 2: HepG2 whole cell lysate
Lane 3: Jurkat whole cell lysate
Lane 4: Hela whole cell lysate
Lane 5: 293T whole cell lysate
Secondary
Goat polyclonal to rabbit IgG at 1/10000 dilution
Predicted band size: 60, 64, 61, 37 kDa
Observed band size: 60 kDa