

Product datasheet for **TA387099**

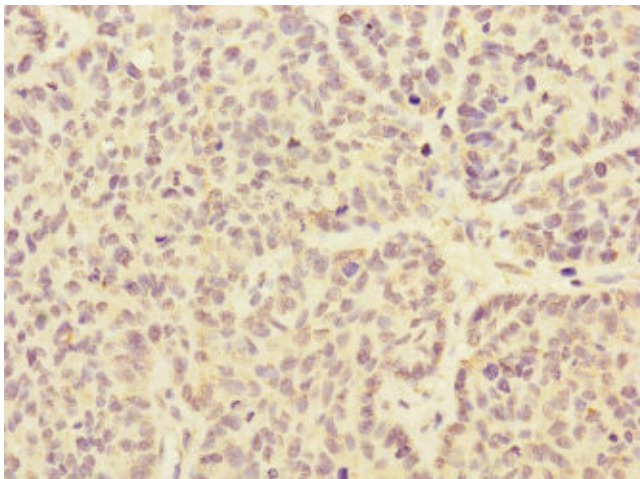
ARHGEF3 Rabbit Polyclonal Antibody

Product data:

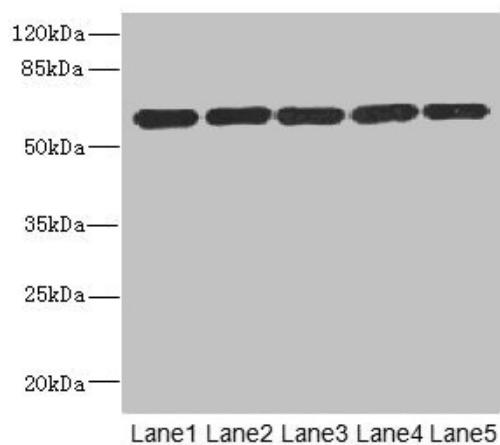
Product Type:	Primary Antibodies
Applications:	IHC, WB
Recommended Dilution:	Recommended dilution: WB:1:1000-1:5000, IHC:1:20-1:200
Reactivity:	Human
Host:	Rabbit
Isotype:	IgG
Clonality:	Polyclonal
Immunogen:	Recombinant Human Rho guanine nucleotide exchange factor 3 protein (287-526AA)
Formulation:	PBS with 0.02% sodium azide, 50% glycerol, pH7.3.
Concentration:	lot specific
Purification:	Antigen Affinity Purified
Conjugation:	Unconjugated
Storage:	Upon receipt, store at -20°C or -80°C. Avoid repeated freeze.
Stability:	1 year from dispatch.
Database Link:	Q9NR81
Background:	Acts as guanine nucleotide exchange factor (GEF) for RhoA and RhoB GTPases.



[View online »](#)

Product images:

Immunohistochemistry of paraffin-embedded human ovarian cancer using TA387099 at dilution of 1:100



Western blot
All lanes: ARHGEF3 antibody at 2.21 µg/ml
Lane 1: MCF-7 whole cell lysate
Lane 2: HepG2 whole cell lysate
Lane 3: Jurkat whole cell lysate
Lane 4: Hela whole cell lysate
Lane 5: 293T whole cell lysate
Secondary
Goat polyclonal to rabbit IgG at 1/10000 dilution
Predicted band size: 60, 64, 61, 37 kDa
Observed band size: 60 kDa