

## Product datasheet for **TA387098**

### ENTPD7 Rabbit Polyclonal Antibody

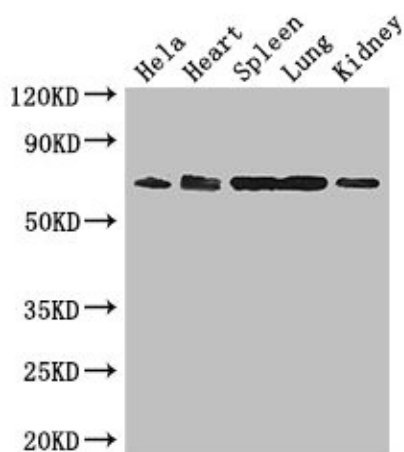
#### Product data:

Product Type:	Primary Antibodies
Applications:	IF, WB
Recommended Dilution:	Recommended dilution: WB:1:2000-1:10000, IF:1:50-1:200
Reactivity:	Mouse, Human
Host:	Rabbit
Isotype:	IgG
Clonality:	Polyclonal
Immunogen:	Recombinant Human Ectonucleoside triphosphate diphosphohydrolase 7 protein (51-350AA)
Formulation:	Preservative: 0.03% Proclin 300 Constituents: 50% Glycerol, 0.01M PBS, PH 7.4
Concentration:	lot specific
Purification:	>95%, Protein G purified
Conjugation:	Unconjugated
Storage:	Upon receipt, store at -20°C or -80°C. Avoid repeated freeze.
Stability:	1 year from dispatch.
Database Link:	<a href="#">Q9NQZ7</a>
Background:	Preferentially hydrolyzes nucleoside 5'-triphosphates. The order of activity with respect to possible substrates is UTP > GTP > CTP.



[View online »](#)

## Product images:



### Western Blot

Positive WB detected in: HeLa whole cell lysate, Mouse heart tissue, Mouse spleen tissue, Mouse lung tissue, Mouse kidney tissue

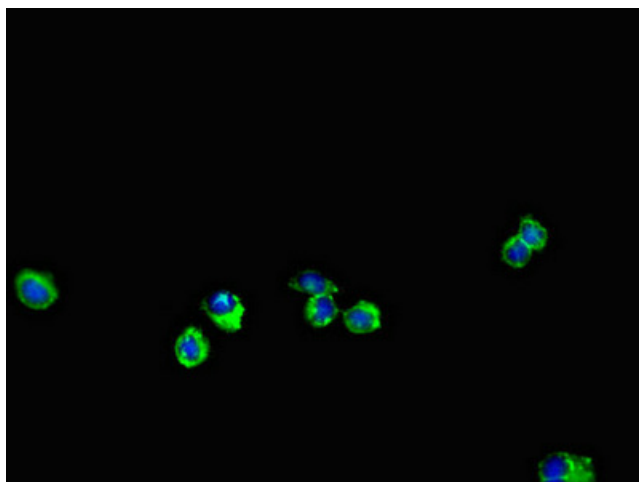
All lanes: ENTDP7 antibody at 2.8µg/ml

Secondary

Goat polyclonal to rabbit IgG at 1/50000 dilution

Predicted band size: 69 kDa

Observed band size: 69 kDa



Immunofluorescent analysis of HeLa cells using TA387098 at dilution of 1:100 and Alexa Fluor 488-conjugated AffiniPure Goat Anti-Rabbit IgG(H+L)