

Product datasheet for **TA387095M**

ARFGAP3 Rabbit Polyclonal Antibody

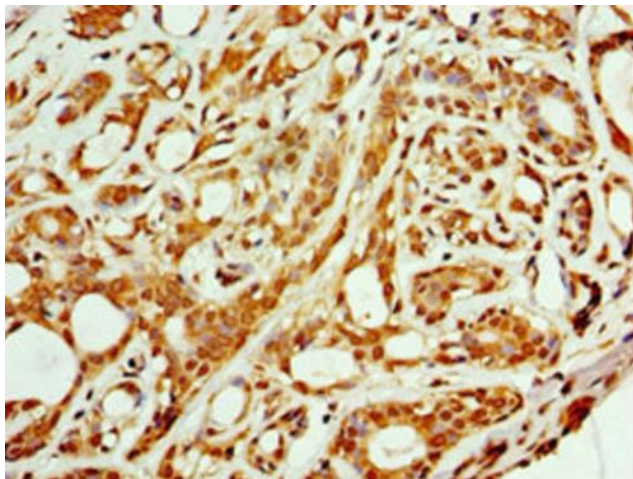
Product data:

Product Type:	Primary Antibodies
Applications:	IHC, IP, WB
Recommended Dilution:	Recommended dilution: WB:1:1000-1:5000, IHC:1:20-1:200, IP:1:200-1:2000
Reactivity:	Human
Host:	Rabbit
Isotype:	IgG
Clonality:	Polyclonal
Immunogen:	Recombinant Human ADP-ribosylation factor GTPase-activating protein 3 protein (217-516AA)
Formulation:	PBS with 0.02% sodium azide, 50% glycerol, pH7.3.
Concentration:	lot specific
Purification:	Antigen Affinity Purified
Conjugation:	Unconjugated
Storage:	Upon receipt, store at -20°C or -80°C. Avoid repeated freeze.
Stability:	1 year from dispatch.
Database Link:	Q9NP61
Background:	GTPase-activating protein (GAP) for ADP ribosylation factor 1 (ARF1). Hydrolysis of ARF1-bound GTP may lead to dissociation of coatamer from Golgi-derived membranes to allow fusion with target membranes.

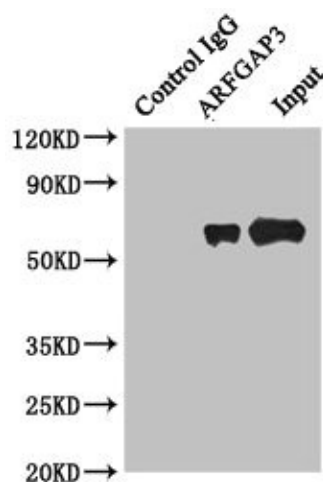


[View online »](#)

Product images:



Immunohistochemistry of paraffin-embedded human breast cancer using [TA387095] at dilution of 1:100

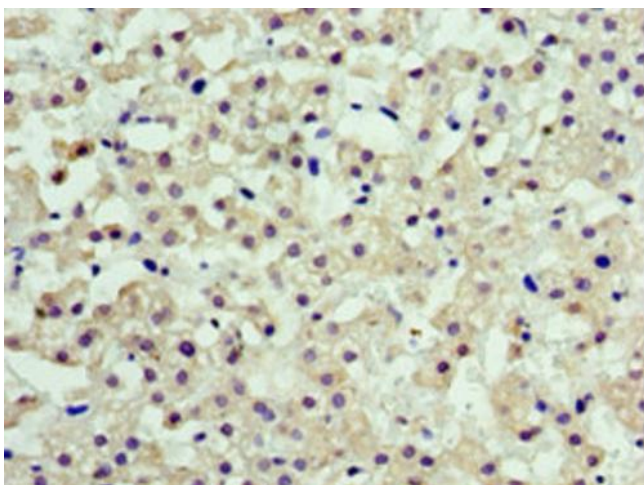


Immunoprecipitating ARFGAP3 in HepG2 whole cell lysate

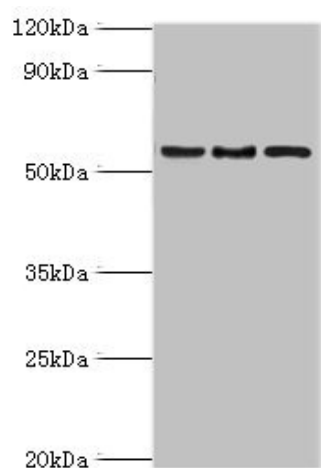
Lane 1: Rabbit control IgG instead of (1μg) instead of [TA387095] in HepG2 whole cell lysate. For western blotting, a HRP-conjugated anti-rabbit IgG, specific to the non-reduced form of IgG was used as the Secondary antibody (1/50000)

Lane 2: [TA387095] (4μg) + HepG2 whole cell lysate (500μg)

Lane 3: HepG2 whole cell lysate (20μg)



Immunohistochemistry of paraffin-embedded human liver cancer using [TA387095] at dilution of 1:100



Western blot

All lanes: ARFGAP3 antibody at 4 μ g/ml

Lane 1: HepG2 whole cell lysate

Lane 2: Jurkat whole cell lysate

Lane 3: A549 whole cell lysate

Secondary

Goat polyclonal to rabbit IgG at 1/10000 dilution

Predicted band size: 57, 52 kDa

Observed band size: 57 kDa