

Product datasheet for **TA387093M**

MCCC2 Rabbit Polyclonal Antibody

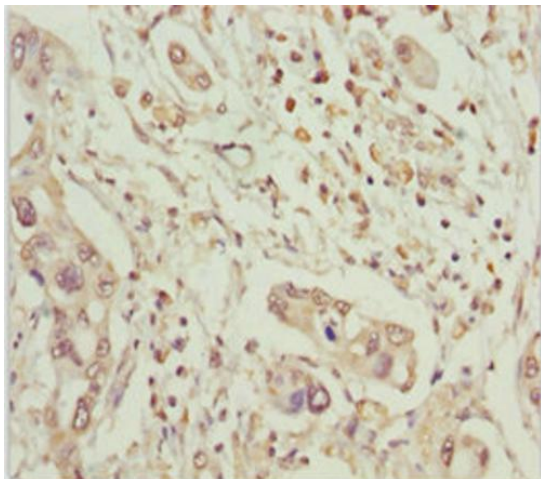
Product data:

Product Type:	Primary Antibodies
Applications:	IHC, WB
Recommended Dilution:	Recommended dilution: WB:1:1000-1:5000, IHC:1:20-1:200
Reactivity:	Mouse, Human
Host:	Rabbit
Isotype:	IgG
Clonality:	Polyclonal
Immunogen:	Recombinant Human Methylcrotonoyl-CoA carboxylase beta chain, mitochondrial protein (284-563AA)
Formulation:	PBS with 0.02% sodium azide, 50% glycerol, pH7.3.
Concentration:	lot specific
Purification:	Antigen Affinity Purified
Conjugation:	Unconjugated
Storage:	Upon receipt, store at -20°C or -80°C. Avoid repeated freeze.
Stability:	1 year from dispatch.
Database Link:	Q9HCC0
Background:	Carboxyltransferase subunit of the 3-methylcrotonyl-CoA carboxylase, an enzyme that catalyzes the conversion of 3-methylcrotonyl-CoA to 3-methylglutaconyl-CoA, a critical step for leucine and isovaleric acid catabolism.

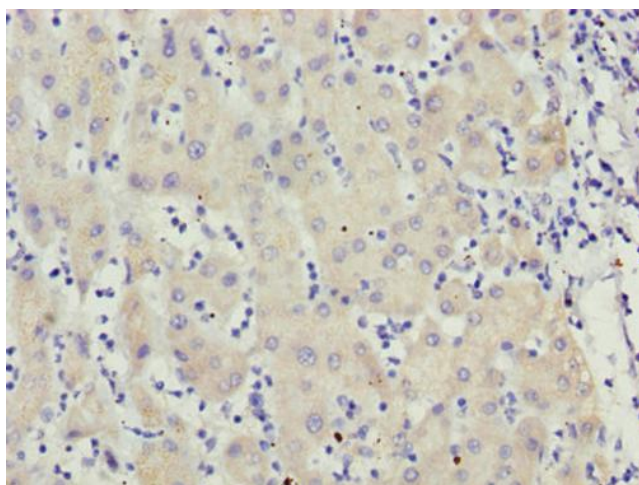


[View online »](#)

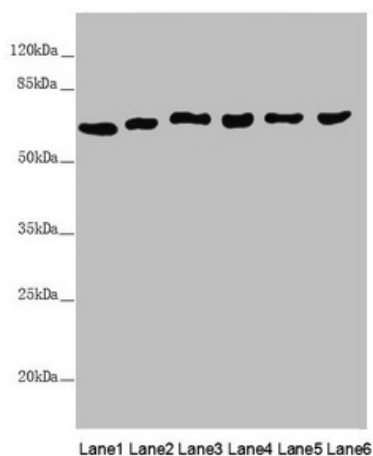
Product images:



Immunohistochemistry of paraffin-embedded human pancreatic cancer using [TA387093] at dilution of 1:100



Immunohistochemistry of paraffin-embedded human liver cancer using [TA387093] at dilution of 1:100



Western blot

All lanes: MCCC2 antibody at 6.85µg/ml

Lane 1: Mouse brain tissue

Lane 2: Hela whole cell lysate

Lane 3: MCF-7 whole cell lysate

Lane 4: K562 whole cell lysate

Lane 5: HepG2 whole cell lysate

Lane 6: A549 whole cell lysate

Secondary

Goat polyclonal to rabbit IgG at 1/10000 dilution

Predicted band size: 62, 58 kDa

Observed band size: 62 kDa