

## Product datasheet for **TA387091**

### CYP3A43 Rabbit Polyclonal Antibody

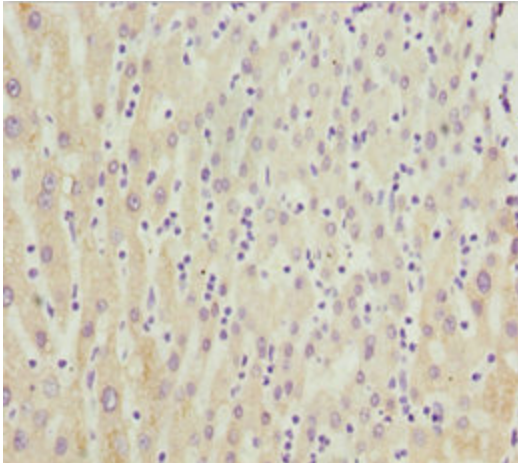
#### Product data:

Product Type:	Primary Antibodies
Applications:	IHC, WB
Recommended Dilution:	Recommended dilution: WB:1:1000-1:5000, IHC:1:20-1:200
Reactivity:	Mouse, Human
Host:	Rabbit
Isotype:	IgG
Clonality:	Polyclonal
Immunogen:	Recombinant Human Cytochrome P450 3A43 protein (244-503AA)
Formulation:	PBS with 0.02% sodium azide, 50% glycerol, pH7.3.
Concentration:	lot specific
Purification:	Antigen Affinity Purified
Conjugation:	Unconjugated
Storage:	Upon receipt, store at -20°C or -80°C. Avoid repeated freeze.
Stability:	1 year from dispatch.
Database Link:	<a href="#">Q9HB55</a>
Background:	Exhibits low testosterone 6-beta-hydroxylase activity.

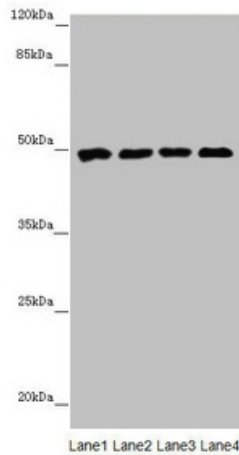


[View online »](#)

**Product images:**



Immunohistochemistry of paraffin-embedded human liver cancer using TA387091 at dilution of 1:100



Western blot  
 All lanes: CYP3A43 antibody at 2.41 µg/ml  
 Lane 1: Mouse liver tissue  
 Lane 2: Mouse skeletal muscle tissue  
 Lane 3: Jurkat whole cell lysate  
 Lane 4: 293T whole cell lysate  
 Secondary  
 Goat polyclonal to rabbit IgG at 1/10000 dilution  
 Predicted band size: 58, 49, 29, 45 kDa  
 Observed band size: 49 kDa