

Product datasheet for **TA387090**

CYP3A43 Rabbit Polyclonal Antibody

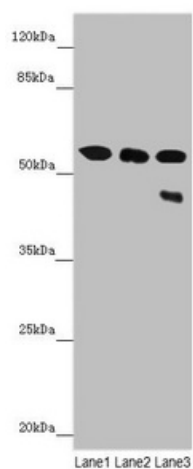
Product data:

Product Type:	Primary Antibodies
Applications:	WB
Recommended Dilution:	Recommended dilution: WB:1:1000-1:5000
Reactivity:	Mouse, Human
Host:	Rabbit
Isotype:	IgG
Clonality:	Polyclonal
Immunogen:	Recombinant Human Cytochrome P450 3A43 protein (244-503AA)
Formulation:	PBS with 0.02% sodium azide, 50% glycerol, pH7.3.
Concentration:	lot specific
Purification:	Antigen Affinity Purified
Conjugation:	Unconjugated
Storage:	Upon receipt, store at -20°C or -80°C. Avoid repeated freeze.
Stability:	1 year from dispatch.
Database Link:	Q9HB55
Background:	Exhibits low testosterone 6-beta-hydroxylase activity.



[View online »](#)

Product images:



Western blot

All lanes: CYP3A43 antibody at 3.25 $\mu\text{g/ml}$

Lane 1: Mouse liver tissue

Lane 2: Mouse skeletal muscle tissue

Lane 3: 293T whole cell lysate

Secondary

Goat polyclonal to rabbit IgG at 1/10000 dilution

Predicted band size: 58, 49, 29, 45 kDa

Observed band size: 58, 45 kDa