

Product datasheet for **TA387089**

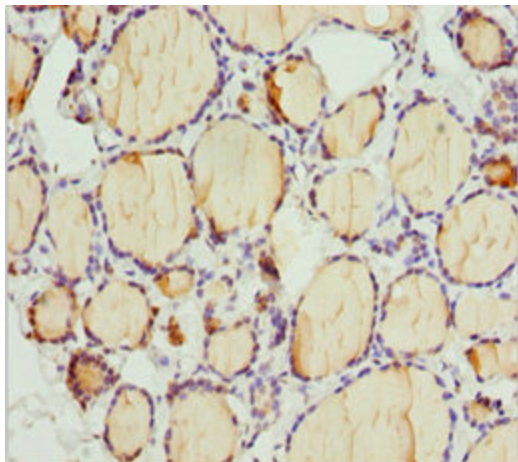
PLEKHA1 Rabbit Polyclonal Antibody

Product data:

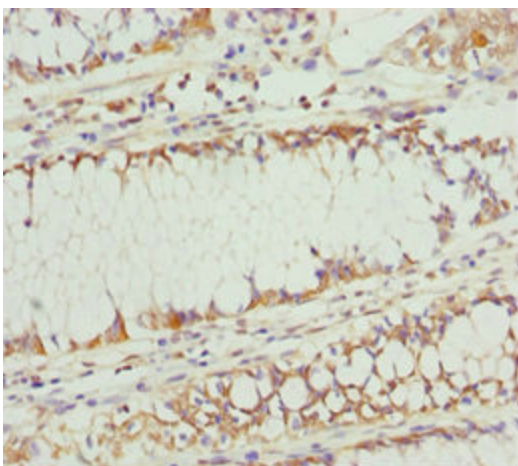
Product Type:	Primary Antibodies
Applications:	IHC, WB
Recommended Dilution:	Recommended dilution: WB:1:1000-1:5000, IHC:1:20-1:200
Reactivity:	Human
Host:	Rabbit
Isotype:	IgG
Clonality:	Polyclonal
Immunogen:	Recombinant Human Pleckstrin homology domain-containing family A member 1 protein (285-404AA)
Formulation:	PBS with 0.02% sodium azide, 50% glycerol, pH7.3.
Concentration:	lot specific
Purification:	Antigen Affinity Purified
Conjugation:	Unconjugated
Storage:	Upon receipt, store at -20°C or -80°C. Avoid repeated freeze.
Stability:	1 year from dispatch.
Database Link:	Q9HB21
Background:	Binds specifically to phosphatidylinositol 3,4-diphosphate (PtdIns3,4P2), but not to other phosphoinositides. May recruit other proteins to the plasma membrane.



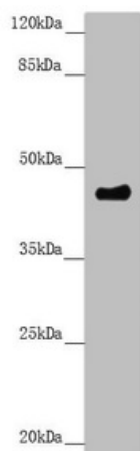
[View online »](#)

Product images:

Immunohistochemistry of paraffin-embedded human thyroid tissue using TA387089 at dilution of 1:100



Immunohistochemistry of paraffin-embedded human colon cancer using TA387089 at dilution of 1:100



Western blot

All lanes: PLEKHA1 antibody at 3.11 μ g/ml + A549 whole cell lysate

Secondary

Goat polyclonal to rabbit IgG at 1/10000 dilution

Predicted band size: 46, 39 kDa

Observed band size: 46 kDa