

Product datasheet for **TA387084M**

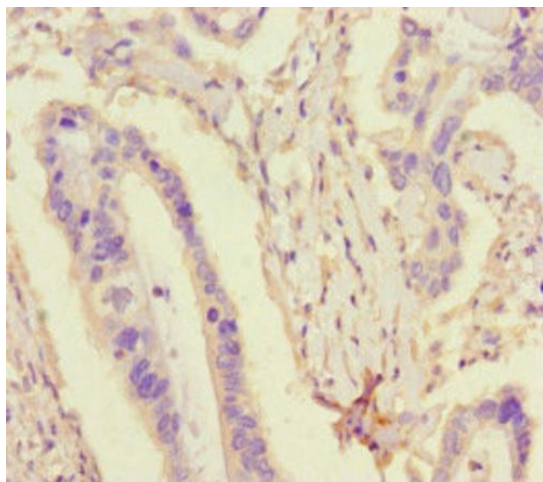
TDRD3 Rabbit Polyclonal Antibody

Product data:

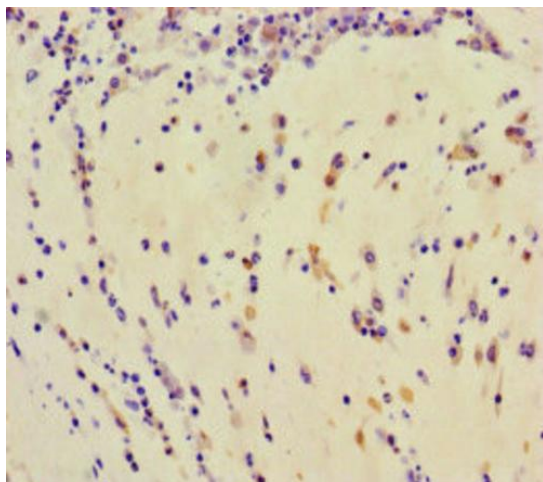
| | |
|-----------------------|--|
| Product Type: | Primary Antibodies |
| Applications: | IHC, WB |
| Recommended Dilution: | Recommended dilution: WB:1:2000-1:5000, IHC:1:20-1:200 |
| Reactivity: | Human |
| Host: | Rabbit |
| Isotype: | IgG |
| Clonality: | Polyclonal |
| Immunogen: | Recombinant Human Tudor domain-containing protein 3 protein (401-651AA) |
| Formulation: | Preservative: 0.03% Proclin 300 Constituents: 50% Glycerol, 0.01M PBS, PH 7.4 |
| Concentration: | lot specific |
| Purification: | >95%, Protein G purified |
| Conjugation: | Unconjugated |
| Storage: | Upon receipt, store at -20°C or -80°C. Avoid repeated freeze. |
| Stability: | 1 year from dispatch. |
| Database Link: | Q9H7E2 |
| Background: | Scaffolding protein that specifically recognizes and binds dimethylarginine-containing proteins. In nucleus, acts as a coactivator: recognizes and binds asymmetric dimethylation on the core histone tails associated with transcriptional activation (H3R17me2a and H4R3me2a) and recruits proteins at these arginine-methylated loci. In cytoplasm, may play a role in the assembly and/or disassembly of mRNA stress granules and in the regulation of translation of target mRNAs by binding Arg/Gly-rich motifs (GAR) in dimethylarginine-containing proteins. |


[View online »](#)

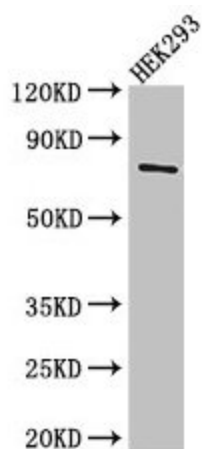
Product images:



Immunohistochemistry of paraffin-embedded human pancreatic cancer using [TA387084] at dilution of 1:100



Immunohistochemistry of paraffin-embedded human lung cancer using [TA387084] at dilution of 1:100



Western Blot

Positive WB detected in: HEK293 whole cell lysate

All lanes: TDRD3 antibody at 3µg/ml

Secondary

Goat polyclonal to rabbit IgG at 1/50000 dilution

Predicted band size: 74, 84 kDa

Observed band size: 74 kDa