

## Product datasheet for **TA387079M**

### CSRNP2 Rabbit Polyclonal Antibody

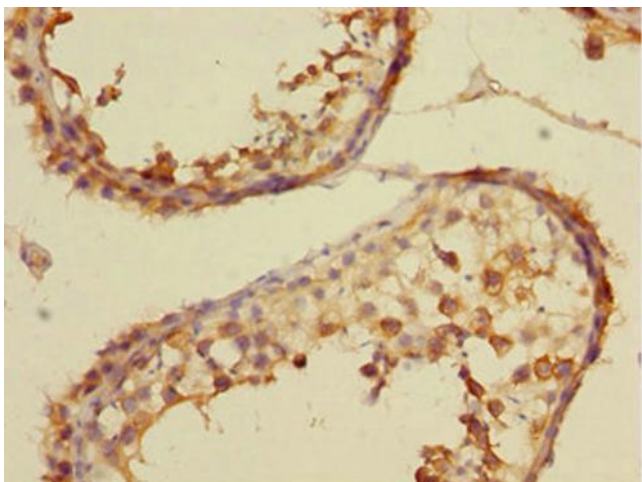
#### Product data:

Product Type:	Primary Antibodies
Applications:	IHC, WB
Recommended Dilution:	Recommended dilution: WB:1:1000-1:5000, IHC:1:20-1:200
Reactivity:	Mouse, Human
Host:	Rabbit
Isotype:	IgG
Clonality:	Polyclonal
Immunogen:	Recombinant Human Cysteine/serine-rich nuclear protein 2 protein (324-543AA)
Formulation:	PBS with 0.02% sodium azide, 50% glycerol, pH7.3.
Concentration:	lot specific
Purification:	Antigen Affinity Purified
Conjugation:	Unconjugated
Storage:	Upon receipt, store at -20°C or -80°C. Avoid repeated freeze.
Stability:	1 year from dispatch.
Database Link:	<a href="#">Q9H175</a>
Background:	Binds to the consensus sequence 5'-AGAGTG-3' and has transcriptional activator activity (By similarity). May play a role in apoptosis.

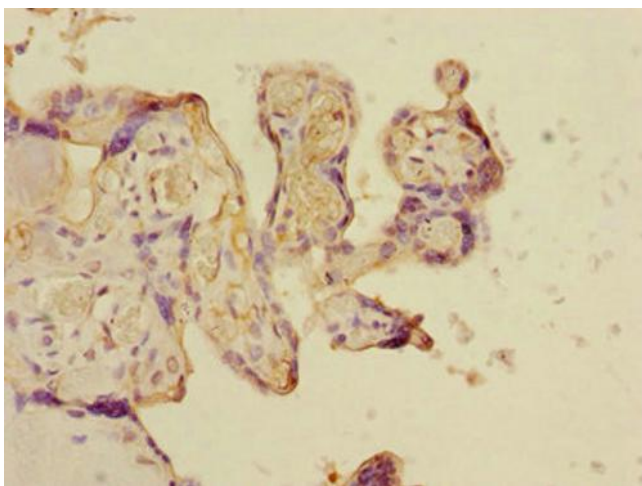


[View online »](#)

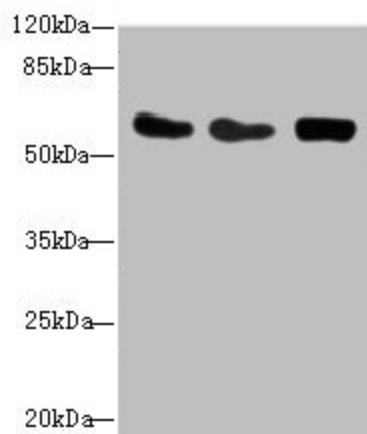
**Product images:**



Immunohistochemistry of paraffin-embedded human testis tissue using [TA387079] at dilution of 1:100



Immunohistochemistry of paraffin-embedded human placenta tissue using [TA387079] at dilution of 1:100



Western blot

All lanes: CSRNP2 antibody at 2.71 $\mu$ g/ml

Lane 1: Mouse heart tissue

Lane 2: HepG2 whole cell lysate

Lane 3: Mouse brain tissue

Secondary

Goat polyclonal to rabbit IgG at 1/10000 dilution

Predicted band size: 60 kDa

Observed band size: 60 kDa