

## Product datasheet for **TA387072**

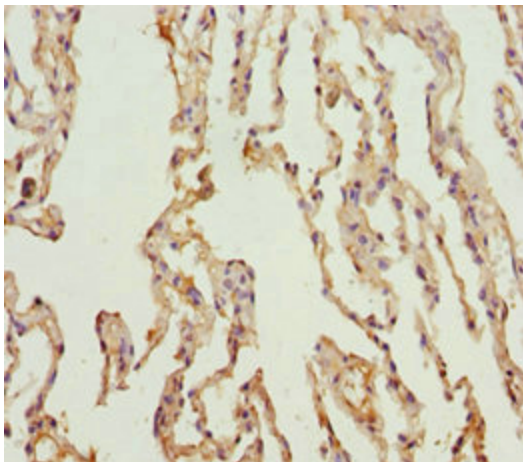
### KCNS3 Rabbit Polyclonal Antibody

#### Product data:

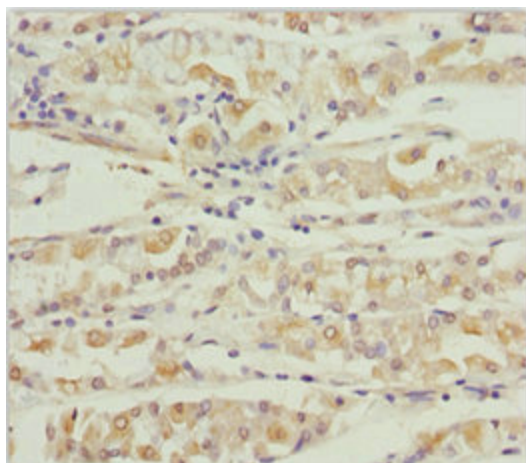
Product Type:	Primary Antibodies
Applications:	IHC, WB
Recommended Dilution:	Recommended dilution: WB:1:1000-1:5000, IHC:1:20-1:200
Reactivity:	Mouse, Human
Host:	Rabbit
Isotype:	IgG
Clonality:	Polyclonal
Immunogen:	Recombinant Human Potassium voltage-gated channel subfamily S member 3 protein (1-180AA)
Formulation:	PBS with 0.02% sodium azide, 50% glycerol, pH7.3.
Concentration:	lot specific
Purification:	Antigen Affinity Purified
Conjugation:	Unconjugated
Storage:	Upon receipt, store at -20°C or -80°C. Avoid repeated freeze.
Stability:	1 year from dispatch.
Database Link:	<a href="#">Q9BQ31</a>
Background:	Potassium channel subunit that does not form functional channels by itself. Can form functional heterotetrameric channels with KCNB1; modulates the delayed rectifier voltage-gated potassium channel activation and deactivation rates of KCNB1 (PubMed:10484328). Heterotetrameric channel activity formed with KCNB1 show increased current amplitude with the threshold for action potential activation shifted towards more negative values in hypoxic-treated pulmonary artery smooth muscle cells (By similarity).



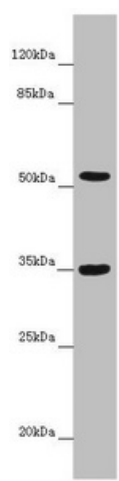
[View online »](#)

**Product images:**

Immunohistochemistry of paraffin-embedded human lung tissue using TA387072 at dilution of 1:100



Immunohistochemistry of paraffin-embedded human gastric cancer using TA387072 at dilution of 1:100



Western blot

All lanes: KCNS3 antibody at 6.35  $\mu\text{g/ml}$  + Mouse lung tissue

Secondary

Goat polyclonal to rabbit IgG at 1/10000 dilution

Predicted band size: 56 kDa

Observed band size: 56, 35 kDa