

## Product datasheet for **TA387066M**

### **RPL10L Rabbit Polyclonal Antibody**

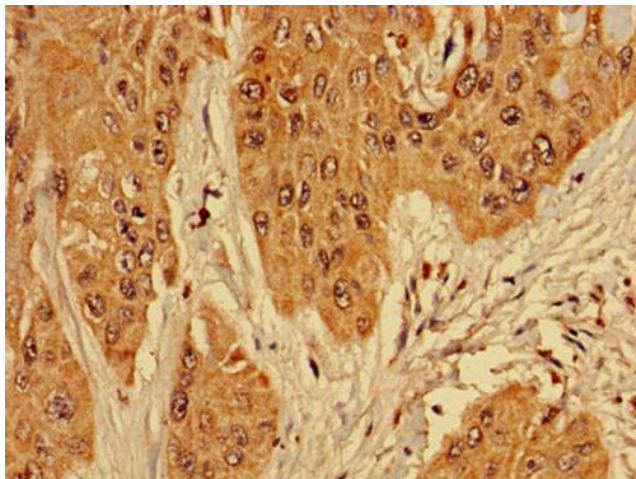
#### **Product data:**

|                       |   |
|-----------------------|---|
| Product Type:         | Primary Antibodies  |
| Applications:         | IHC, WB   |
| Recommended Dilution: | Recommended dilution: WB:1:500-1:2000, IHC:1:20-1:200                                     |
| Reactivity:           | Mouse, Human  |
| Host:                 | Rabbit  |
| Isotype:              | IgG   |
| Clonality:            | Polyclonal  |
| Immunogen:            | Recombinant Human 60S ribosomal protein L10-like protein (1-214AA)                        |
| Formulation:          | Preservative: 0.03% Proclin 300<br>Constituents: 50% Glycerol, 0.01M PBS, PH 7.4          |
| Concentration:        | lot specific  |
| Purification:         | >95%, Protein G purified  |
| Conjugation:          | Unconjugated  |
| Storage:              | Upon receipt, store at -20°C or -80°C. Avoid repeated freeze.                             |
| Stability:            | 1 year from dispatch.   |
| Database Link:        | <a href="#">Q96L21</a>  |
| Background:           | May play a role in compensating for the inactivated X-linked gene during spermatogenesis. |

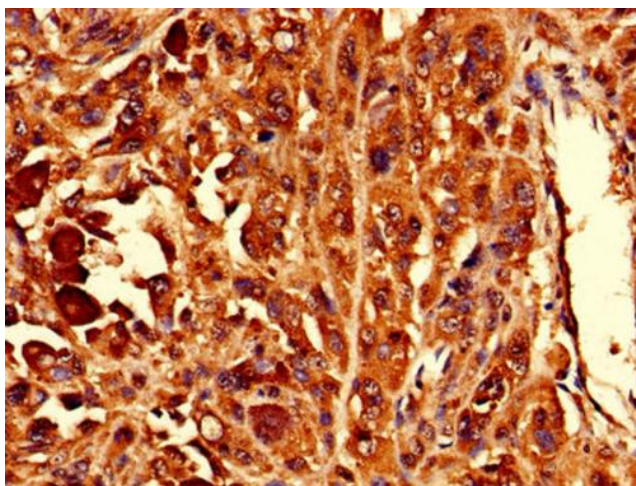


[View online »](#)

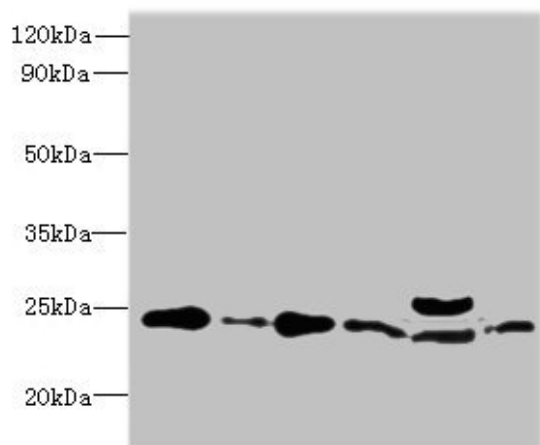
**Product images:**



Immunohistochemistry of paraffin-embedded human cervical cancer using [TA387066] at dilution of 1:100



Immunohistochemistry of paraffin-embedded human melanoma using [TA387066] at dilution of 1:100



Western blot

All lanes: RPL10L antibody at 4µg/ml

Lane 1: Jurkat whole cell lysate

Lane 2: Hela whole cell lysate

Lane 3: HL60 whole cell lysate

Lane 4: K562 whole cell lysate

Lane 5: Mouse liver tissue

Lane 6: MCF-7 whole cell lysate

Secondary

Goat polyclonal to rabbit IgG at 1/10000 dilution

Predicted band size: 25 kDa

Observed band size: 25 kDa