

## Product datasheet for **TA387060M**

### **HVCN1 Rabbit Polyclonal Antibody**

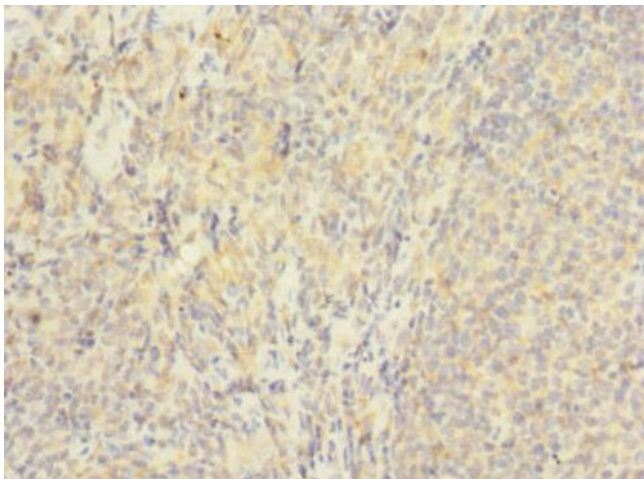
#### **Product data:**

Product Type:	Primary Antibodies
Applications:	IHC, WB
Recommended Dilution:	Recommended dilution: WB:1:1000-1:5000, IHC:1:20-1:200
Reactivity:	Human
Host:	Rabbit
Isotype:	IgG
Clonality:	Polyclonal
Immunogen:	Recombinant Human Voltage-gated hydrogen channel 1 protein (1-100AA)
Formulation:	PBS with 0.02% sodium azide, 50% glycerol, pH7.3.
Concentration:	lot specific
Purification:	Antigen Affinity Purified
Conjugation:	Unconjugated
Storage:	Upon receipt, store at -20°C or -80°C. Avoid repeated freeze.
Stability:	1 year from dispatch.
Database Link:	<a href="#">Q96D96</a>
Background:	Mediates the voltage-dependent proton permeability of excitable membranes. Forms a proton-selective channel through which protons may pass in accordance with their electrochemical gradient. Proton efflux, accompanied by membrane depolarization, facilitates acute production of reactive oxygen species in phagocytosis.

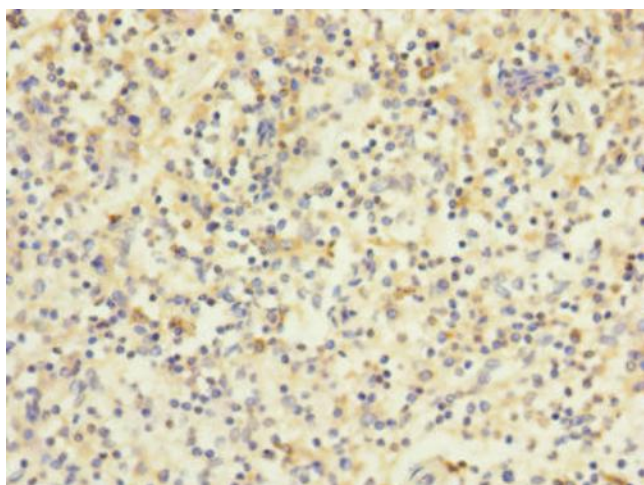


[View online »](#)

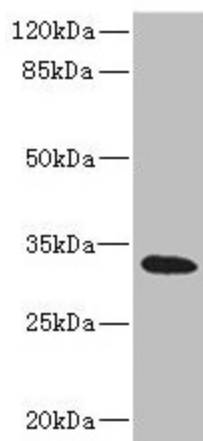
**Product images:**



Immunohistochemistry of paraffin-embedded human tonsil tissue using [TA387060] at dilution of 1:100



Immunohistochemistry of paraffin-embedded human spleen tissue using [TA387060] at dilution of 1:100



Western blot  
 All lanes: HVCN1 antibody at 1.17 $\mu$ g/ml + Raji whole cell lysate  
 Secondary  
 Goat polyclonal to rabbit IgG at 1/10000 dilution  
 Predicted band size: 32, 28, 30 kDa  
 Observed band size: 32 kDa