

Product datasheet for **TA387057M**

RERG Rabbit Polyclonal Antibody

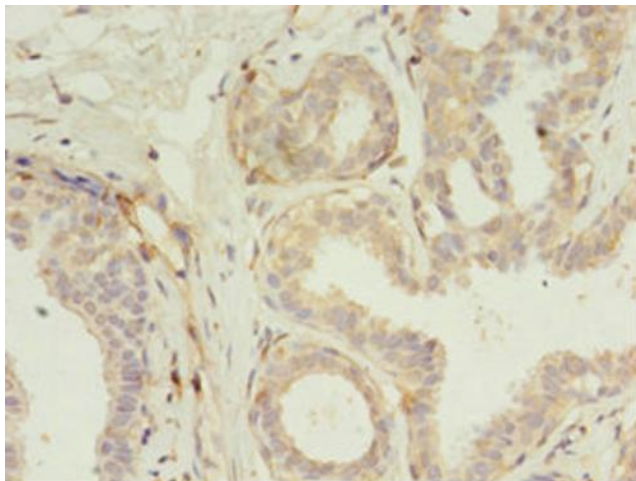
Product data:

Product Type:	Primary Antibodies
Applications:	IHC, WB
Recommended Dilution:	Recommended dilution: WB:1:500-1:2000, IHC:1:20-1:200
Reactivity:	Mouse, Rat, Human
Host:	Rabbit
Isotype:	IgG
Clonality:	Polyclonal
Immunogen:	Recombinant Human Ras-related and estrogen-regulated growth inhibitor protein (1-199AA)
Formulation:	Preservative: 0.03% Proclin 300 Constituents: 50% Glycerol, 0.01M PBS, PH 7.4
Concentration:	lot specific
Purification:	>95%, Protein G purified
Conjugation:	Unconjugated
Storage:	Upon receipt, store at -20°C or -80°C. Avoid repeated freeze.
Stability:	1 year from dispatch.
Database Link:	Q96A58
Background:	Binds GDP/GTP and possesses intrinsic GTPase activity. Has higher affinity for GDP than for GTP. In cell lines overexpression leads to a reduction in the rate of proliferation, colony formation and in tumorigenic potential.

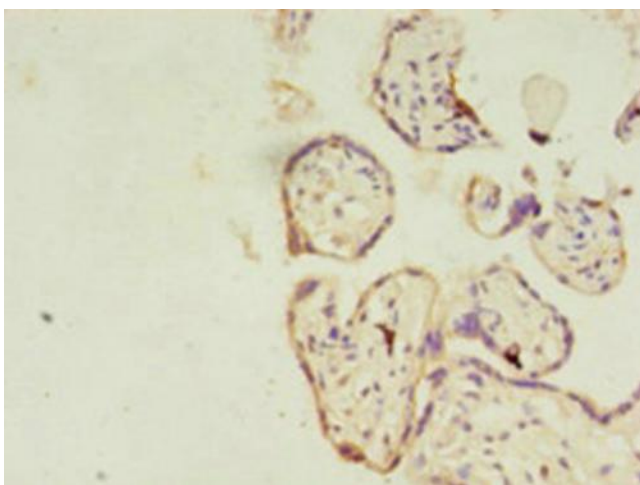


[View online »](#)

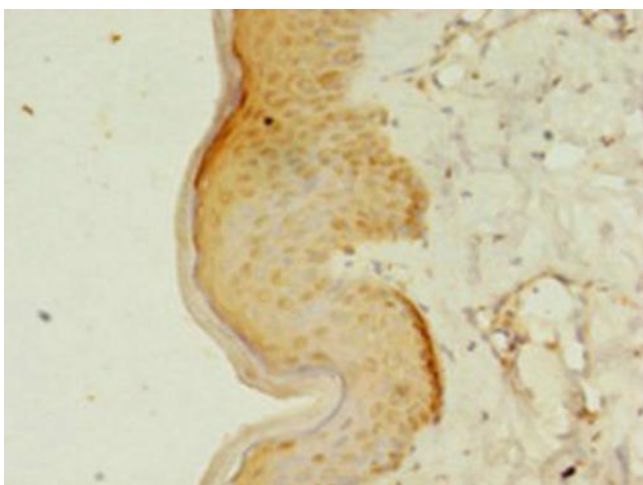
Product images:



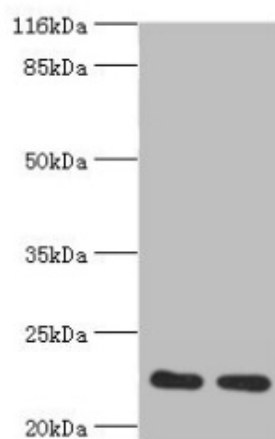
Immunohistochemistry of paraffin-embedded human breast cancer using [TA387057] at dilution of 1:100



Immunohistochemistry of paraffin-embedded human placenta tissue using [TA387057] at dilution of 1:100



Immunohistochemistry of paraffin-embedded human skin tissue using [TA387057] at dilution of 1:100



Western blot
All lanes: RERG antibody at 2 μ g/ml
Lane 1: Mouse thymus tissue
Lane 2: Rat lung tissue
Secondary
Goat polyclonal to rabbit IgG at 1/10000 dilution
Predicted band size: 23, 21 kDa
Observed band size: 23 kDa