

Product datasheet for **TA387051M**

DEPDC1B Rabbit Polyclonal Antibody

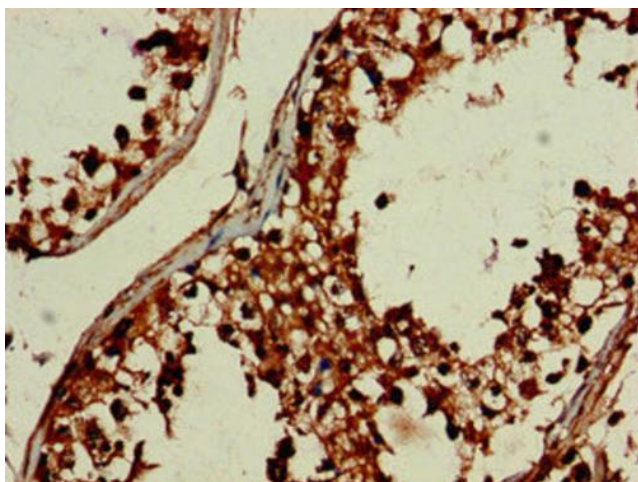
Product data:

Product Type:	Primary Antibodies
Applications:	IF, IHC, WB
Recommended Dilution:	Recommended dilution: WB:1:500-1:5000, IHC:1:20-1:200, IF:1:50-1:200
Reactivity:	Human
Host:	Rabbit
Isotype:	IgG
Clonality:	Polyclonal
Immunogen:	Recombinant Human DEP domain-containing protein 1B protein (343-529AA)
Formulation:	Preservative: 0.03% Proclin 300 Constituents: 50% Glycerol, 0.01M PBS, pH 7.4
Concentration:	lot specific
Purification:	>95%, Protein G purified
Conjugation:	Unconjugated
Storage:	Upon receipt, store at -20°C or -80°C. Avoid repeated freeze.
Stability:	1 year from dispatch.
Database Link:	Q8WUY9
Background:	cytosol, GTPase activator activity, cell migration, positive regulation of Wnt signaling pathway, regulation of small GTPase mediated signal transduction

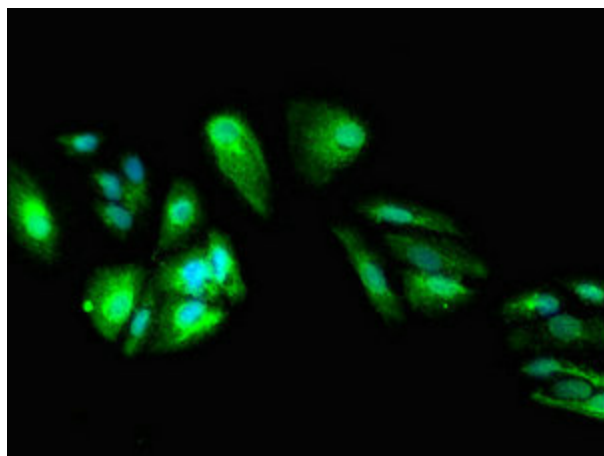


[View online »](#)

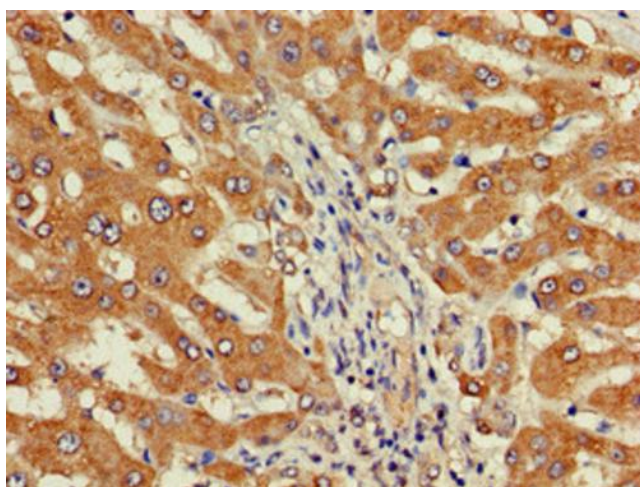
Product images:



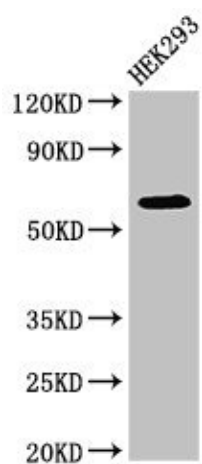
Immunohistochemistry of paraffin-embedded human testis tissue using [TA387051] at dilution of 1:100



Immunofluorescent analysis of HepG2 cells using [TA387051] at dilution of 1:100 and Alexa Fluor 488-conjugated AffiniPure Goat Anti-Rabbit IgG(H+L)



Immunohistochemistry of paraffin-embedded human liver cancer using [TA387051] at dilution of 1:100



Western Blot
Positive WB detected in: HEK293 whole cell lysate
All lanes: DEPDC1B antibody at 4µg/ml
Secondary
Goat polyclonal to rabbit IgG at 1/50000 dilution
Predicted band size: 62, 55 kDa
Observed band size: 62 kDa