

## Product datasheet for **TA387048**

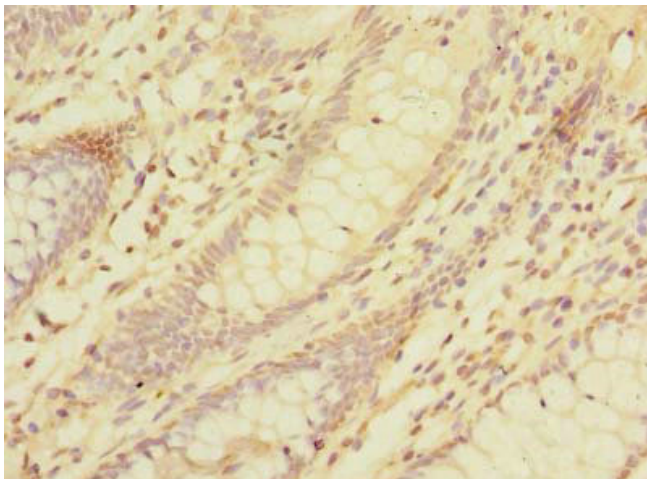
### LMO3 Rabbit Polyclonal Antibody

#### Product data:

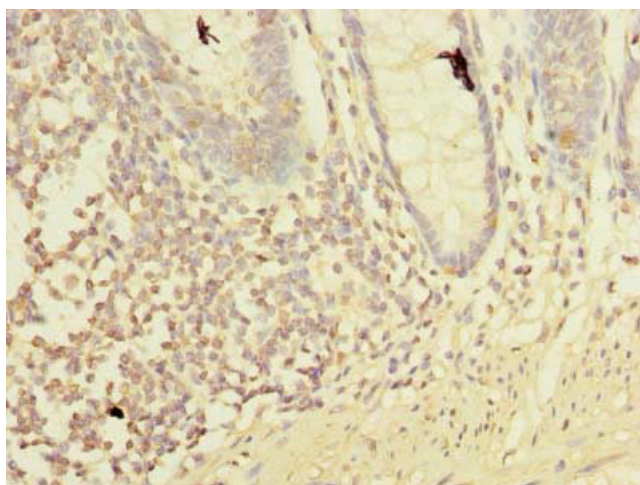
Product Type:	Primary Antibodies
Applications:	IHC, WB
Recommended Dilution:	Recommended dilution: WB:1:500-1:2000, IHC:1:20-1:200
Reactivity:	Human
Host:	Rabbit
Isotype:	IgG
Clonality:	Polyclonal
Immunogen:	Recombinant Human LIM domain only protein 3 protein (1-145AA)
Formulation:	Preservative: 0.03% Proclin 300 Constituents: 50% Glycerol, 0.01M PBS, PH 7.4
Concentration:	lot specific
Purification:	>95%, Protein G purified
Conjugation:	Unconjugated
Storage:	Upon receipt, store at -20°C or -80°C. Avoid repeated freeze.
Stability:	1 year from dispatch.
Database Link:	<a href="#">Q8TAP4</a>
Background:	cytoplasm, negative regulation of ERK1 and ERK2 cascade, positive regulation of fat cell differentiation, positive regulation of glucocorticoid receptor signaling pathway, positive regulation of peroxisome proliferator activated receptor signaling pathway



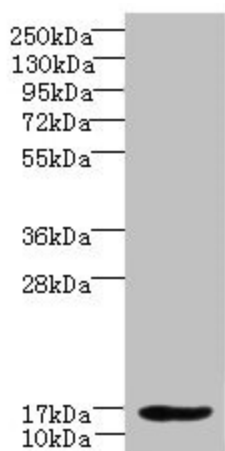
[View online »](#)

**Product images:**

Immunohistochemistry of paraffin-embedded human colon cancer using TA387048 at dilution of 1:100



Immunohistochemistry of paraffin-embedded human colon tissue using TA387048 at dilution of 1:100



Western blot

All lanes: LMO3 antibody at 6 $\mu$ g/ml + HeLa whole cell lysate

Secondary

Goat polyclonal to rabbit IgG at 1/10000 dilution

Predicted band size: 17, 20, 18, 19 kDa

Observed band size: 17 kDa