

Product datasheet for **TA387044**

POC1A Rabbit Polyclonal Antibody

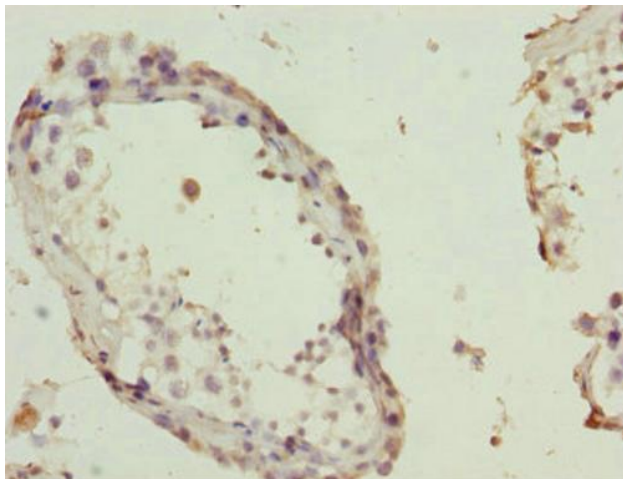
Product data:

Product Type:	Primary Antibodies
Applications:	IHC, WB
Recommended Dilution:	Recommended dilution: WB:1:1000-1:5000, IHC:1:20-1:200
Reactivity:	Human
Host:	Rabbit
Isotype:	IgG
Clonality:	Polyclonal
Immunogen:	Recombinant Human POC1 centriolar protein homolog A protein (138-407AA)
Formulation:	PBS with 0.02% sodium azide, 50% glycerol, pH7.3.
Concentration:	lot specific
Purification:	Antigen Affinity Purified
Conjugation:	Unconjugated
Storage:	Upon receipt, store at -20°C or -80°C. Avoid repeated freeze.
Stability:	1 year from dispatch.
Database Link:	Q8NBT0
Background:	Plays an important role in centriole assembly and/or stability and ciliogenesis. Involved in early steps of centriole duplication, as well as in the later steps of centriole length control. Acts in concert with POC1B to ensure centriole integrity and proper mitotic spindle formation.

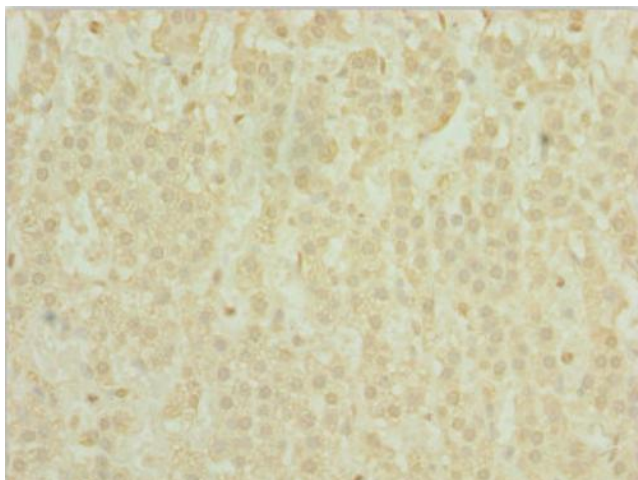


[View online »](#)

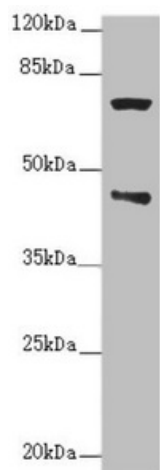
Product images:



Immunohistochemistry of paraffin-embedded human testis tissue using TA387044 at dilution of 1:100



Immunohistochemistry of paraffin-embedded human adrenal gland tissue using TA387044 at dilution of 1:100



Western blot

All lanes: POC1A antibody at 2.76 μ g/ml + Raji whole cell lysate

Secondary

Goat polyclonal to rabbit IgG at 1/10000 dilution

Predicted band size: 46, 40, 41 kDa

Observed band size: 46, 70 kDa