

## Product datasheet for **TA387038M**

### GCNT2 Rabbit Polyclonal Antibody

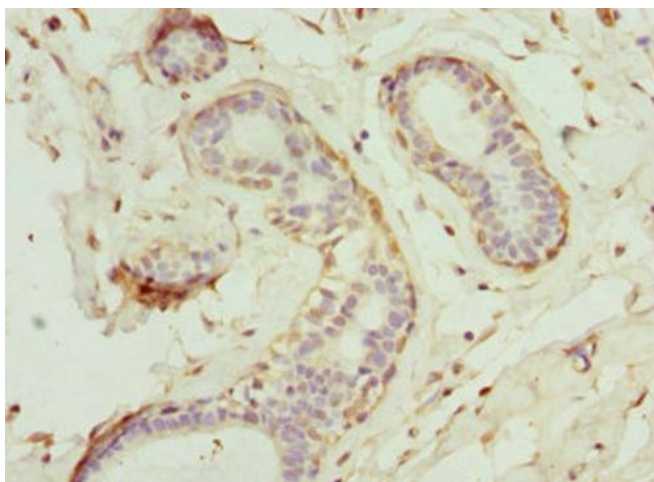
#### Product data:

Product Type:	Primary Antibodies
Applications:	IHC, WB
Recommended Dilution:	Recommended dilution: WB:1:1000-1:5000, IHC:1:20-1:200
Reactivity:	Mouse, Human
Host:	Rabbit
Isotype:	IgG
Clonality:	Polyclonal
Immunogen:	Recombinant Human N-acetyllactosaminide beta-1,6-N-acetylglucosaminyl-transferase protein (203-402AA)
Formulation:	PBS with 0.02% sodium azide, 50% glycerol, pH7.3.
Concentration:	lot specific
Purification:	Antigen Affinity Purified
Conjugation:	Unconjugated
Storage:	Upon receipt, store at -20°C or -80°C. Avoid repeated freeze.
Stability:	1 year from dispatch.
Database Link:	<a href="#">Q8N0V5</a>
Background:	Branching enzyme that converts linear into branched poly-N-acetyllactosaminoglycans. Introduces the blood group I antigen during embryonic development. It is closely associated with the development and maturation of erythroid cells.

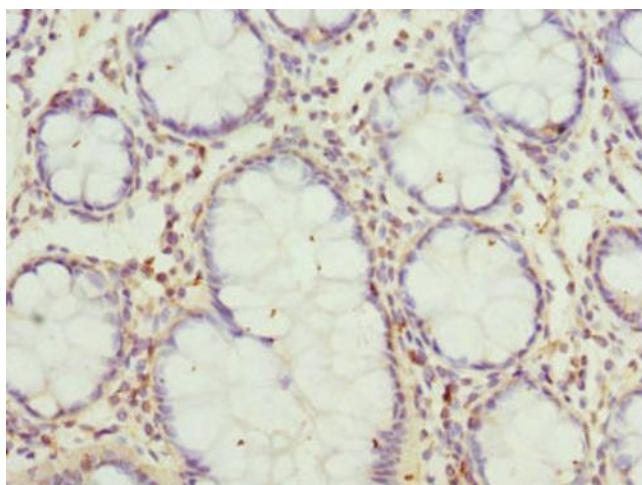


[View online »](#)

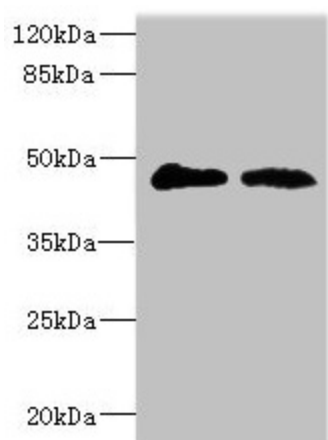
## Product images:



Immunohistochemistry of paraffin-embedded human breast cancer using [TA387038] at dilution of 1:100



Immunohistochemistry of paraffin-embedded human colon cancer using [TA387038] at dilution of 1:100



**Western blot**

All lanes: GCNT2 antibody at 3.99µg/ml

Lane 1: 293T whole cell lysate

Lane 2: Mouse placenta tissue

Secondary

Goat polyclonal to rabbit IgG at 1/10000 dilution

Predicted band size: 46, 47 kDa

Observed band size: 46 kDa