

## Product datasheet for **TA387037M**

### ELMOD2 Rabbit Polyclonal Antibody

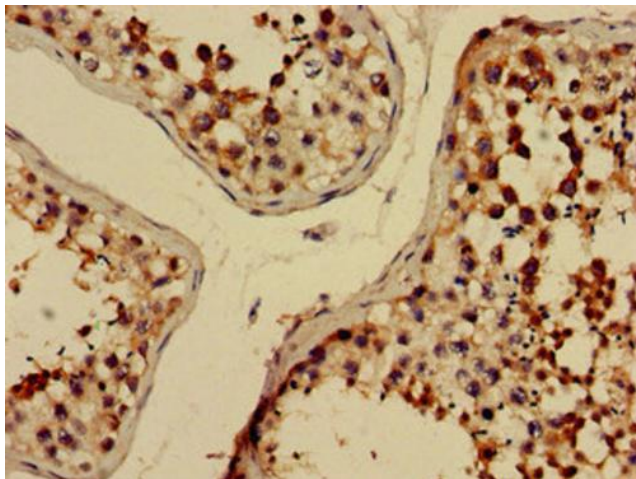
#### Product data:

Product Type:	Primary Antibodies
Applications:	IHC, WB
Recommended Dilution:	Recommended dilution: WB:1:500-1:5000, IHC:1:20-1:200
Reactivity:	Mouse, Human
Host:	Rabbit
Isotype:	IgG
Clonality:	Polyclonal
Immunogen:	Recombinant Human ELMO domain-containing protein 2 protein (82-200AA)
Formulation:	Preservative: 0.03% Proclin 300 Constituents: 50% Glycerol, 0.01M PBS, pH 7.4
Concentration:	lot specific
Purification:	>95%, Protein G purified
Conjugation:	Unconjugated
Storage:	Upon receipt, store at -20°C or -80°C. Avoid repeated freeze.
Stability:	1 year from dispatch.
Database Link:	<a href="#">Q8IZ81</a>
Background:	Acts as a GTPase-activating protein (GAP) toward guanine nucleotide exchange factors like ARL2, ARL3, ARF1 and ARF6, but not for GTPases outside the Arf family. Regulates IFN-related antiviral responses.

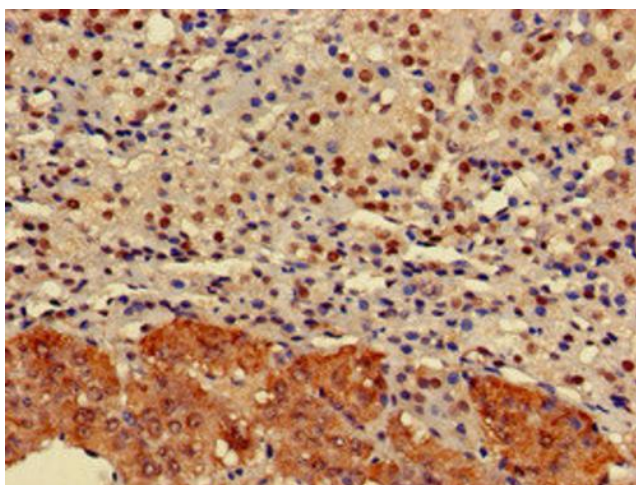


[View online »](#)

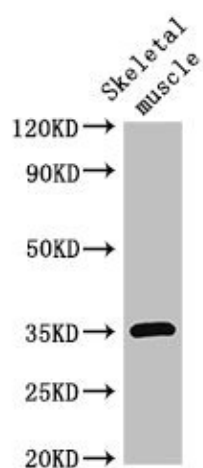
## Product images:



Immunohistochemistry of paraffin-embedded human testis tissue using [TA387037] at dilution of 1:100



Immunohistochemistry of paraffin-embedded human adrenal gland tissue using [TA387037] at dilution of 1:100



Western Blot

Positive WB detected in: Mouse skeletal muscle tissue

All lanes: ELMOD2 antibody at 3µg/ml

Secondary

Goat polyclonal to rabbit IgG at 1/50000 dilution

Predicted band size: 35 kDa

Observed band size: 35 kDa