

Product datasheet for **TA387033M**

GLYCTK Rabbit Polyclonal Antibody

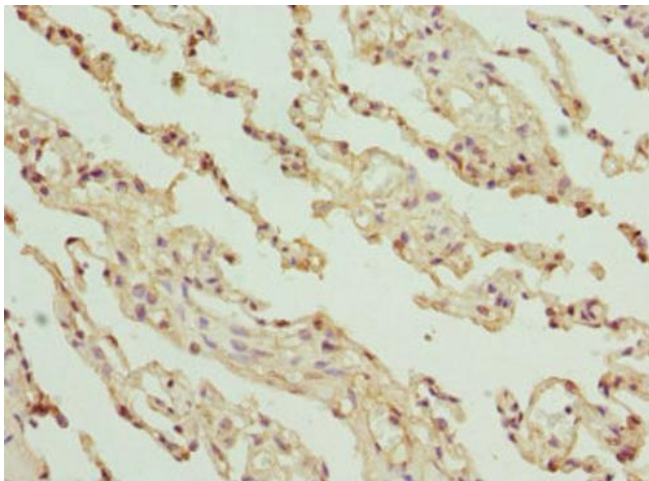
Product data:

Product Type:	Primary Antibodies
Applications:	IHC, WB
Recommended Dilution:	Recommended dilution: WB:1:1000-1:5000, IHC:1:20-1:200
Reactivity:	Mouse, Rat, Human
Host:	Rabbit
Isotype:	IgG
Clonality:	Polyclonal
Immunogen:	Recombinant Human Glycerate kinase protein (284-523AA)
Formulation:	PBS with 0.02% sodium azide, 50% glycerol, pH7.3.
Concentration:	lot specific
Purification:	Antigen Affinity Purified
Conjugation:	Unconjugated
Storage:	Upon receipt, store at -20°C or -80°C. Avoid repeated freeze.
Stability:	1 year from dispatch.
Database Link:	Q8IVS8
Background:	cytoplasm, cytosol, glycerate kinase activity, fructose catabolic process to hydroxyacetone phosphate and glyceraldehyde-3-phosphate, protein phosphorylation

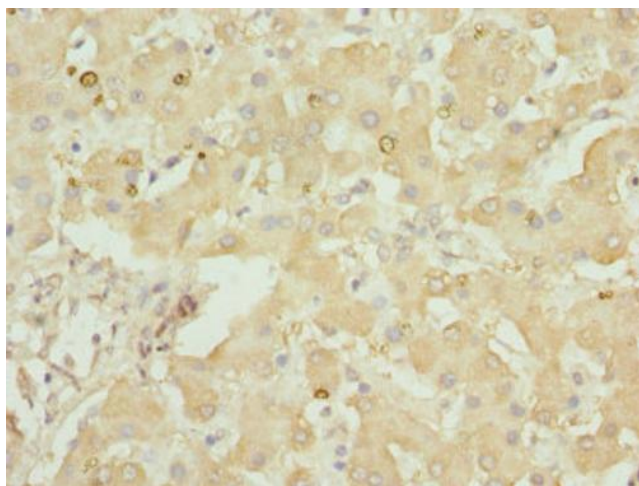


[View online »](#)

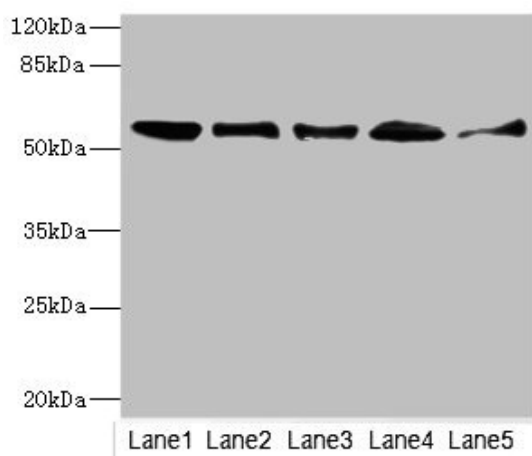
Product images:



Immunohistochemistry of paraffin-embedded human lung tissue using [TA387033] at dilution of 1:100



Immunohistochemistry of paraffin-embedded human liver tissue using [TA387033] at dilution of 1:100



Western blot

All lanes: GLYCTK antibody at 5.43 µg/ml

Lane 1: Mouse liver tissue

Lane 2: Mouse lung tissue

Lane 3: Mouse kidney tissue

Lane 4: Rat lung tissue

Lane 5: NIH/3T3 whole cell lysate

Secondary

Goat polyclonal to rabbit IgG at 1/10000 dilution

Predicted band size: 56, 26, 49, 39, 20, 23 kDa

Observed band size: 56 kDa