

Product datasheet for **TA387032**

P3H2 Rabbit Polyclonal Antibody

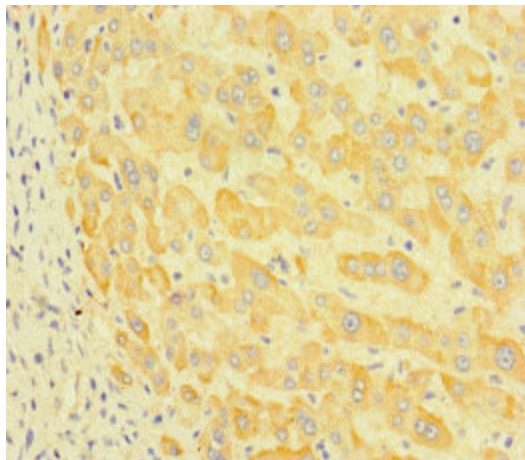
Product data:

Product Type:	Primary Antibodies
Applications:	IHC, WB
Recommended Dilution:	Recommended dilution: WB:1:2000-1:5000, IHC:1:20-1:200
Reactivity:	Mouse, Human
Host:	Rabbit
Isotype:	IgG
Clonality:	Polyclonal
Immunogen:	Recombinant Human Prolyl 3-hydroxylase 2 protein (301-528AA)
Formulation:	Preservative: 0.03% Proclin 300 Constituents: 50% Glycerol, 0.01M PBS, PH 7.4
Concentration:	lot specific
Purification:	>95%, Protein G purified
Conjugation:	Unconjugated
Storage:	Upon receipt, store at -20°C or -80°C. Avoid repeated freeze.
Stability:	1 year from dispatch.
Database Link:	Q8IVL5
Background:	Shows prolyl 3-hydroxylase activity catalyzing the post-translational formation of 3-hydroxyproline in -Xaa-Pro-Gly-sequences in collagens, especially types II, IV and V.

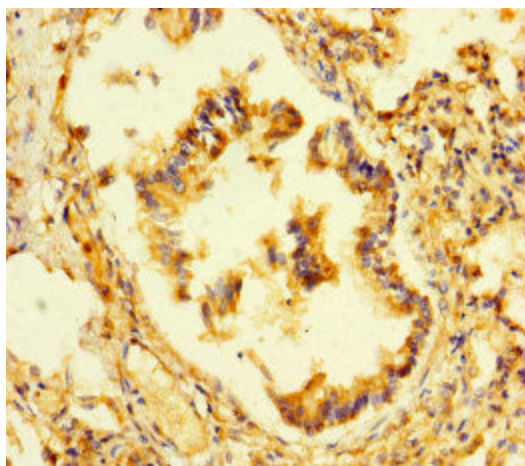


[View online »](#)

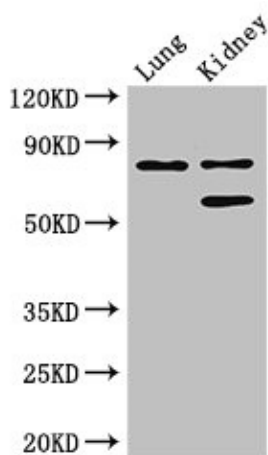
Product images:



Immunohistochemistry of paraffin-embedded human liver tissue using TA387032 at dilution of 1:100



Immunohistochemistry of paraffin-embedded human lung tissue using TA387032 at dilution of 1:100



Western Blot

Positive WB detected in: Mouse lung tissue,
Mouse kidney tissue

All lanes: LEPREL1 antibody at 3 μ g/ml

Secondary

Goat polyclonal to rabbit IgG at 1/50000 dilution

Predicted band size: 81, 61 kDa

Observed band size: 81, 61 kDa