

## Product datasheet for **TA387031M**

### ERC1 Rabbit Polyclonal Antibody

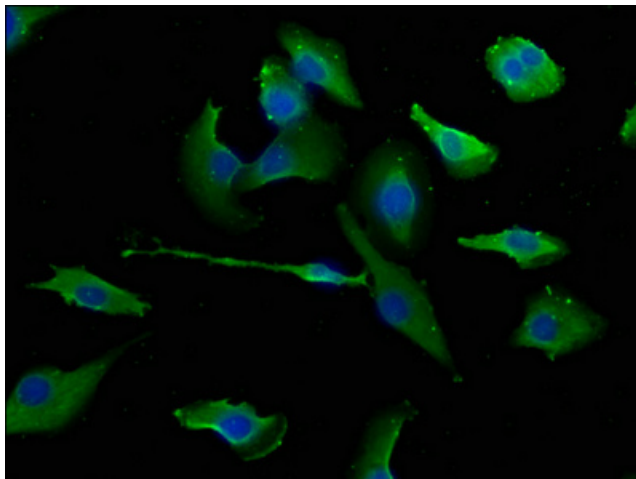
#### Product data:

Product Type:	Primary Antibodies
Applications:	IF, WB
Recommended Dilution:	Recommended dilution: WB:1:1000-1:5000, IF:1:50-1:200
Reactivity:	Human
Host:	Rabbit
Isotype:	IgG
Clonality:	Polyclonal
Immunogen:	Recombinant Human ELKS/Rab6-interacting/CAST family member 1 protein (1-224AA)
Formulation:	Preservative: 0.03% Proclin 300 Constituents: 50% Glycerol, 0.01M PBS, pH 7.4
Concentration:	lot specific
Purification:	>95%, Protein G purified
Conjugation:	Unconjugated
Storage:	Upon receipt, store at -20°C or -80°C. Avoid repeated freeze.
Stability:	1 year from dispatch.
Database Link:	<a href="#">Q8IUD2</a>
Background:	Regulatory subunit of the IKK complex. Probably recruits IkappaBalpha/NFKBIA to the complex. May be involved in the organization of the cytomatrix at the nerve terminals active zone (CAZ) which regulates neurotransmitter release. May be involved in vesicle trafficking at the CAZ. May be involved in Rab-6 regulated endosomes to Golgi transport.

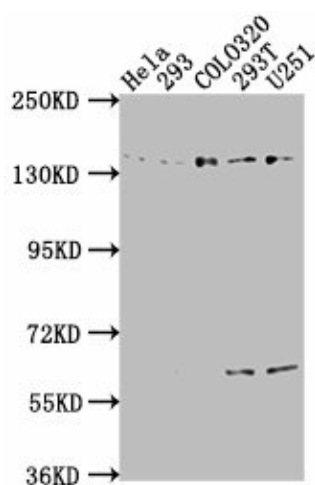


[View online »](#)

## Product images:



Immunofluorescence staining of U251 cells with [TA387031] at 1:133, counter-stained with DAPI. The cells were fixed in 4% formaldehyde, permeabilized using 0.2% Triton X-100 and blocked in 10% normal Goat Serum. The cells were then incubated with the antibody overnight at 4°C. The secondary antibody was Alexa Fluor 488-conjugated AffiniPure Goat Anti-Rabbit IgG(H+L).



### Western Blot

Positive WB detected in: HeLa whole cell lysate, 293 whole cell lysate, COLO320 whole cell lysate, 293T whole cell lysate, U251 whole cell lysate  
All lanes: ERC1 antibody at 1:2000

### Secondary

Goat polyclonal to rabbit IgG at 1/50000 dilution  
Predicted band size: 129, 114, 125, 109, 82 kDa  
Observed band size: 135 kDa