

## Product datasheet for **TA387026M**

### **SNX20 Rabbit Polyclonal Antibody**

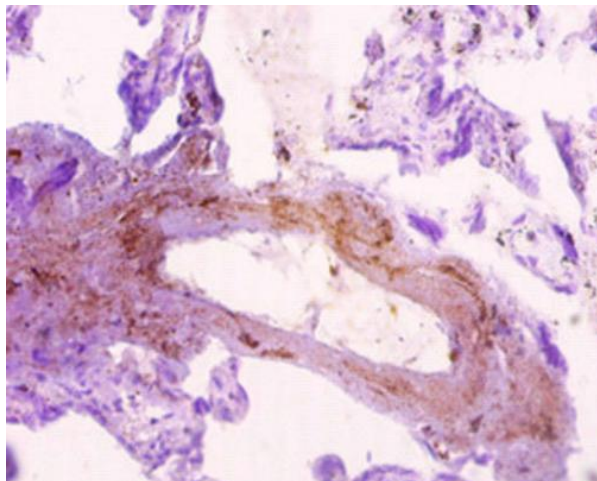
#### **Product data:**

Product Type:	Primary Antibodies
Applications:	IHC, WB
Recommended Dilution:	Recommended dilution: WB:1:1000-1:5000, IHC:1:10-1:200
Reactivity:	Mouse, Human
Host:	Rabbit
Isotype:	IgG
Clonality:	Polyclonal
Immunogen:	Recombinant Human Sorting nexin-20 protein (1-102AA)
Formulation:	Preservative: 0.03% Proclin 300 Constituents: 50% Glycerol, 0.01M PBS, PH 7.4
Concentration:	lot specific
Purification:	>95%, Protein G purified
Conjugation:	Unconjugated
Storage:	Upon receipt, store at -20°C or -80°C. Avoid repeated freeze.
Stability:	1 year from dispatch.
Database Link:	<a href="#">Q7Z614</a>
Background:	Serves as a sorting protein that cycles P-selectin glycoprotein ligand 1 (PSLG1) into endosomes with no impact on leukocytes recruitment.

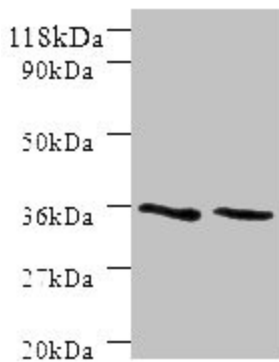


[View online »](#)

## Product images:



Immunohistochemistry of paraffin-embedded human placenta tissue using [TA387026] at dilution of 1:10



Western blot  
All lanes: SNX20 antibody at 2 $\mu$ g/ml  
Lane 1: Mouse spleen tissue  
Lane 2: Mouse skeletal muscle tissue  
Secondary  
Goat polyclonal to rabbit IgG at 1/10000 dilution  
Predicted band size: 37, 18, 15, 12 kDa  
Observed band size: 37 kDa