

## Product datasheet for **TA387024M**

### PEX26 Rabbit Polyclonal Antibody

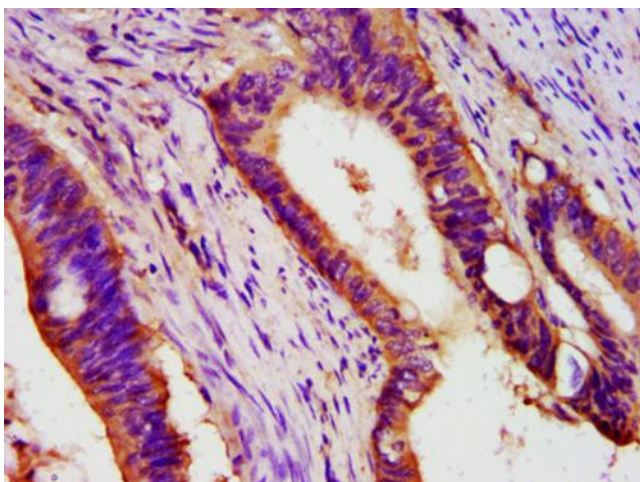
#### Product data:

Product Type:	Primary Antibodies
Applications:	IHC, IP, WB
Recommended Dilution:	Recommended dilution: WB:1:500-1:5000, IHC:1:200-1:500, IP:1:200-1:2000
Reactivity:	Human
Host:	Rabbit
Isotype:	IgG
Clonality:	Polyclonal
Immunogen:	Recombinant Human Peroxisome assembly protein 26 protein (1-159AA)
Formulation:	Preservative: 0.03% Proclin 300 Constituents: 50% Glycerol, 0.01M PBS, pH 7.4
Concentration:	lot specific
Purification:	>95%, Protein G purified
Conjugation:	Unconjugated
Storage:	Upon receipt, store at -20°C or -80°C. Avoid repeated freeze.
Stability:	1 year from dispatch.
Database Link:	<a href="#">Q7Z412</a>
Background:	Probably required for protein import into peroxisomes. Anchors PEX1 and PEX6 to peroxisome membranes, possibly to form heteromeric AAA ATPase complexes required for the import of proteins into peroxisomes. Involved in the import of catalase and proteins containing a PTS2 target sequence, but not in import of proteins with a PTS1 target sequence.

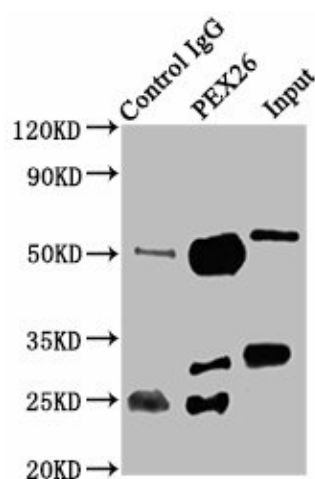


[View online »](#)

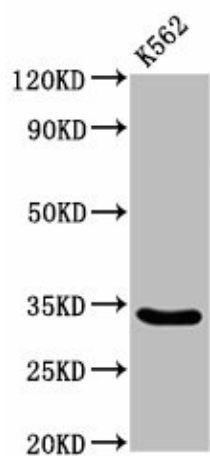
## Product images:



IHC image of [TA387024] diluted at 1:400 and staining in paraffin-embedded human colon cancer performed on a Leica Bond™ system. After dewaxing and hydration, antigen retrieval was mediated by high pressure in a citrate buffer (pH 6.0). Section was blocked with 10% normal goat serum 30min at RT. Then primary antibody (1% BSA) was incubated at 4°C overnight. The primary is detected by a biotinylated secondary antibody and visualized using an HRP conjugated SP system.



Immunoprecipitating PEX26 in K562 whole cell lysate  
 Lane 1: Rabbit control IgG instead of [TA387024] in K562 whole cell lysate. For western blotting, a HRP-conjugated Protein G antibody was used as the secondary antibody (1/2000)  
 Lane 2: [TA387024] (6μg) + K562 whole cell lysate (500μg)  
 Lane 3: K562 whole cell lysate (20μg)



Western Blot

Positive WB detected in: K562 whole cell lysate

All lanes: PEX26 antibody at 3.4µg/ml

Secondary

Goat polyclonal to rabbit IgG at 1/50000 dilution

Predicted band size: 34, 29 kDa

Observed band size: 34 kDa