

Product datasheet for **TA387023**

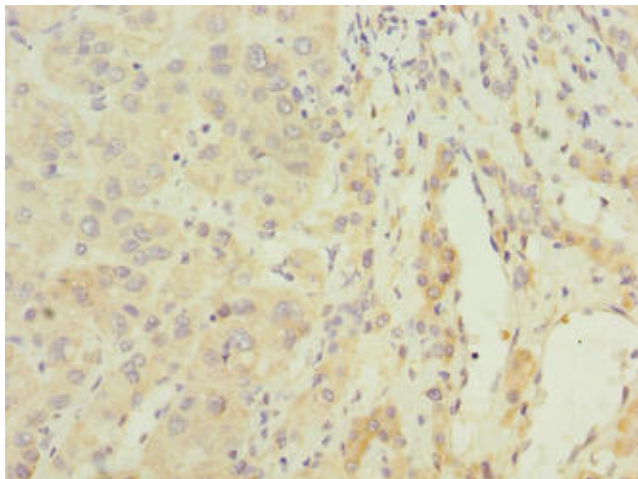
ARMCX2 Rabbit Polyclonal Antibody

Product data:

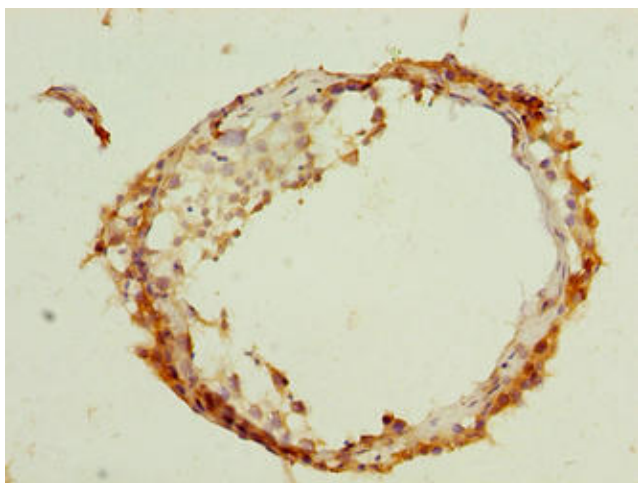
Product Type:	Primary Antibodies
Applications:	IHC, WB
Recommended Dilution:	Recommended dilution: WB:1:500-1:2000, IHC:1:20-1:200
Reactivity:	Human
Host:	Rabbit
Isotype:	IgG
Clonality:	Polyclonal
Immunogen:	Recombinant Human Armadillo repeat-containing X-linked protein 2 protein (161-460AA)
Formulation:	Preservative: 0.03% Proclin 300 Constituents: 50% Glycerol, 0.01M PBS, PH 7.4
Concentration:	lot specific
Purification:	>95%, Protein G purified
Conjugation:	Unconjugated
Storage:	Upon receipt, store at -20°C or -80°C. Avoid repeated freeze.
Stability:	1 year from dispatch.
Database Link:	Q7L311
Background:	May regulate the dynamics and distribution of mitochondria in neural cells.



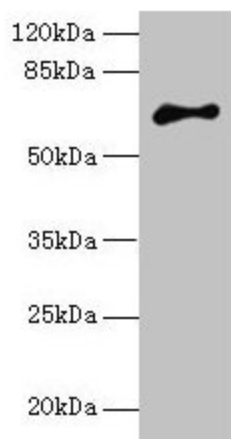
[View online »](#)

Product images:

Immunohistochemistry of paraffin-embedded human liver cancer using TA387023 at dilution of 1:100



Immunohistochemistry of paraffin-embedded human testis tissue using TA387023 at dilution of 1:100



Western blot

All lanes: ARMCX2 antibody at 5 μ g/ml + MCF-7 whole cell lysate

Secondary

Goat polyclonal to rabbit IgG at 1/10000 dilution

Predicted band size: 66 kDa

Observed band size: 66 kDa