

Product datasheet for **TA387016**

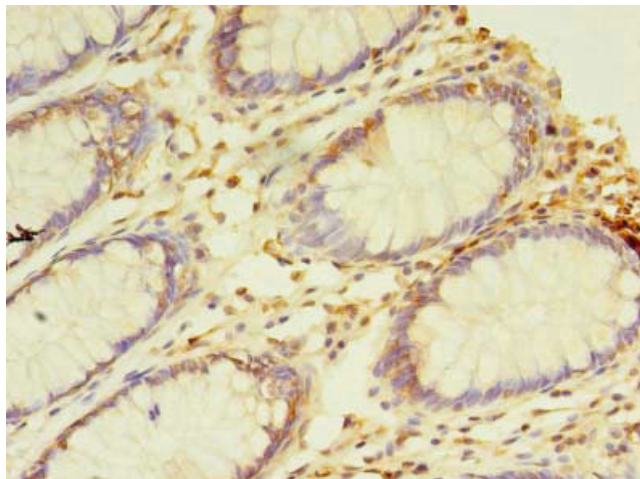
NAIF1 Rabbit Polyclonal Antibody

Product data:

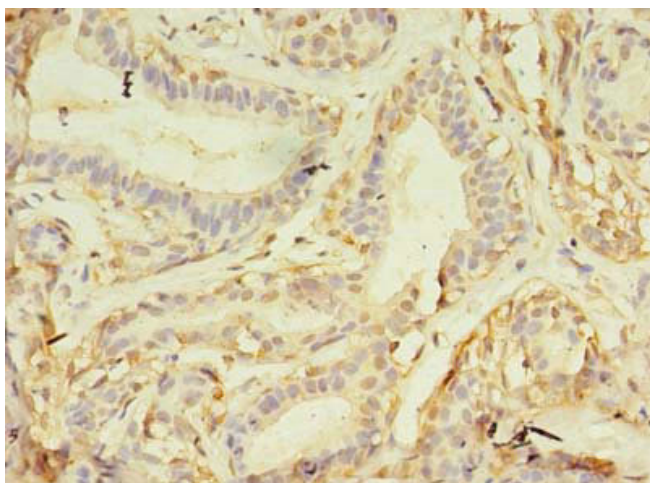
Product Type:	Primary Antibodies
Applications:	IHC, WB
Recommended Dilution:	Recommended dilution: WB:1:500-1:2000, IHC:1:20-1:200
Reactivity:	Mouse, Human
Host:	Rabbit
Isotype:	IgG
Clonality:	Polyclonal
Immunogen:	Recombinant Human Nuclear apoptosis-inducing factor 1 protein (1-172AA)
Formulation:	Preservative: 0.03% Proclin 300 Constituents: 50% Glycerol, 0.01M PBS, PH 7.4
Concentration:	lot specific
Purification:	>95%, Protein G purified
Conjugation:	Unconjugated
Storage:	Upon receipt, store at -20°C or -80°C. Avoid repeated freeze.
Stability:	1 year from dispatch.
Database Link:	Q69YI7
Background:	Induces apoptosis.



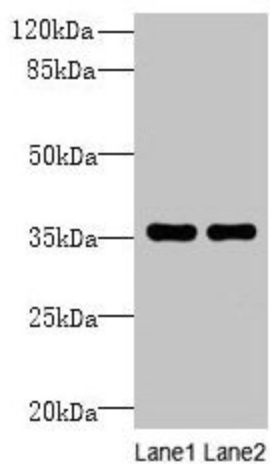
[View online »](#)

Product images:

Immunohistochemistry of paraffin-embedded human colon cancer using TA387016 at dilution of 1:100



Immunohistochemistry of paraffin-embedded human breast cancer using TA387016 at dilution of 1:100



Western blot
All lanes: NAIF1 antibody at 6 μ g/ml
Lane 1: Mouse brain tissue
Lane 2: Mouse heart tissue
Secondary
Goat polyclonal to rabbit IgG at 1/10000 dilution
Predicted band size: 36, 18 kDa
Observed band size: 36 kDa