

Product datasheet for **TA387014M**

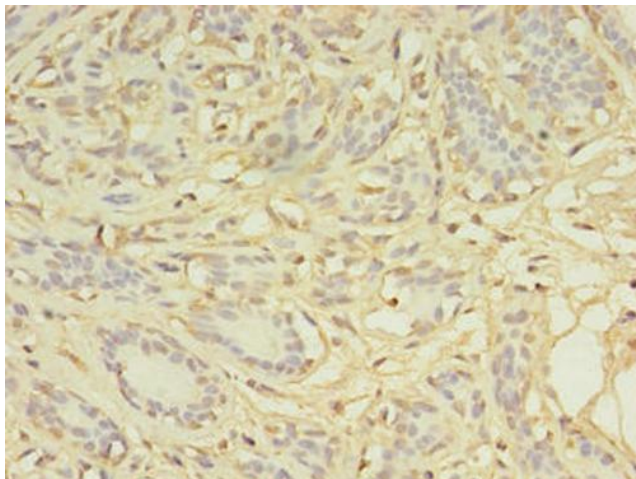
AGBL2 Rabbit Polyclonal Antibody

Product data:

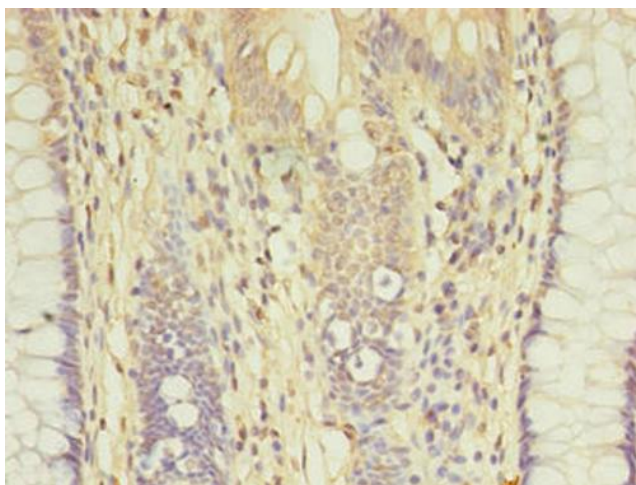
Product Type:	Primary Antibodies
Applications:	IHC, WB
Recommended Dilution:	Recommended dilution: WB:1:500-1:2000, IHC:1:20-1:200
Reactivity:	Mouse, Human
Host:	Rabbit
Isotype:	IgG
Clonality:	Polyclonal
Immunogen:	Recombinant Human Cytosolic carboxypeptidase 2 protein (10-270AA)
Formulation:	Preservative: 0.03% Proclin 300 Constituents: 50% Glycerol, 0.01M PBS, PH 7.4
Concentration:	lot specific
Purification:	>95%, Protein G purified
Conjugation:	Unconjugated
Storage:	Upon receipt, store at -20°C or -80°C. Avoid repeated freeze.
Stability:	1 year from dispatch.
Database Link:	Q5U5Z8
Background:	Metalloprotease that mediates deglutamylation of target proteins. Catalyzes the deglutamylation of polyglutamate side chains generated by post-translational polyglutamylation in proteins such as tubulins. Also removes gene-encoded polyglutamates from the carboxy-terminus of target proteins such as MYLK. Does not show dephosphorylation or deglycosylation activities from the carboxy-terminus of tubulin.

[View online »](#)

Product images:



Immunohistochemistry of paraffin-embedded human breast cancer using [TA387014] at dilution of 1:100



Immunohistochemistry of paraffin-embedded human colon cancer using [TA387014] at dilution of 1:100



Western blot

All lanes: AGBL2 antibody at 8 μ g/ml + Mouse brain tissue

Secondary

Goat polyclonal to rabbit IgG at 1/10000 dilution

Predicted band size: 105, 50, 33 kDa

Observed band size: 105 kDa